

RDA in Croatia

01. Quote

The Croatian node is run by SRCE – University of Zagreb, University Computing Centre. For many years, SRCE has been building elements of national infrastructure for open science that gathered the entire research and higher education community in Croatia.

2006.



2012.



2015.



Besides developing technical infrastructure further, SRCE will, as an RDA node, initiate the development and strengthening of collaboration between researchers, funders, policy makers, librarians and infrastructure in order to encourage sharing publicly funded research data and all other research outputs.

02. Results

A) Formal cooperation with 4 major university libraries in Croatia: University Library Rijeka, University Library Split, City and University Library in Osijek, National and University Library in Zagreb - a network that will support and promote research data sharing, and get involved in RDA activities

B) Adaptation of "23 things: Libraries for Research Data" to Croatian language and context

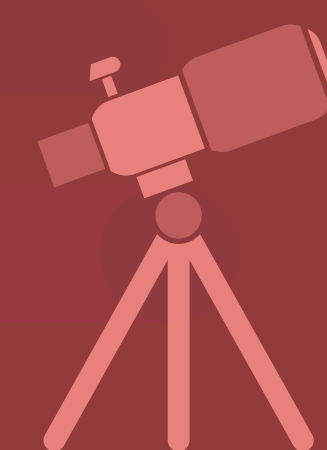
C) Liaison with the Croatian Science Foundation on making the DMP a mandatory part of project proposals in the next application cycle (November 2020)

03. What opportunities are there to engage with the node?

- Data Management Plans
- FAIR data
- Repository certification / CoreTrustSeal
- Library engagement
- Engagement with other EU/EOSC projects
- RDM best practices / national policy
- Regional cooperation



04. Future planned activities and engagement



- A)** Four national RDA events: Rijeka (February, 27), Split (March, 13), Osijek (April, 1) and Zagreb (April, 7- 8)
- B)** Promoting and disseminating the following outputs: "23 things: Libraries for Research Data", CoreTrustSeal for national repository platform and "Engaging Researchers with Data Management: The Cookbook"

05. Takeaway

SRCE is successfully building technical infrastructure (bridges), and, as a national node and with the help of RDA community, it strives to build social bridges between researchers, funders, libraries and infrastructure necessary to support data sharing and reuse.



rda@srce.hr | <https://www.rd-alliance.org/groups/rda-croatia>