



RESEARCH DATA ALLIANCE

Metadata  
Standards  
Catalog  
WORKING GROUP

# Metadata Standards Catalog

Update on progress

Alex Ball

University of Bath

RDA Plenary 9, Barcelona

5 April 2017



We want to get researchers using standard metadata schemes, but

- › they might not **know of a standard** relevant to their data
- › even if they do, they might not know **how to use it**
- › even if they do, it might seem too much like **hard work**
- › even if it doesn't, an ad hoc scheme might seem like a **better fit**

The Metadata Standards Catalog will

- › make it easier to find out about standards
- › make it easier to use standards (tools, examples)
- › help with adapting and migrating between standards

## | **D | C | C** Disciplinary Metadata

## RDA Metadata Standards Directory

### Search by Discipline



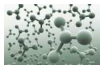
Biology



Earth Science



General Research Data



Physical Science



Social Science & Humanities

### Search by Resource Type

#### Metadata Standards

Specifications for the minimum information that should be collected about research data in order for it to be re-used.

#### Profiles and Extensions

Standards that have been adapted for use in particular types of repositories, or for particular types of data.

#### Use cases

Institutional repositories and data portals using standards to determine which metadata should be collected upon data deposit.

#### Tools

Software that has been developed to capture or store metadata conforming to a specific standard.

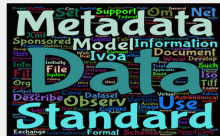
### Metadata

RDA | Metadata Directory

View the standards  
View the extensions  
View the tools  
View the use cases  
Browse by subject areas

Contribute  
Add standards  
Add extensions  
Add tools  
Add use cases

github  
 @twitter  
 linkedin  
 facebook



### Metadata Standards Directory Working Group

The RDA Metadata Standards Directory Working Group is supported by individuals and organizations involved in the development, implementation, and use of metadata for scientific data. The overriding goal is to develop a collaborative, open directory of metadata standards applicable to scientific data can help address infrastructure challenges.

The RDA Metadata Standards Directory is maintained by [Sean Chen](#), [Kate Anne Roberts](#), and [Alex Dalt](#).  
The theme is maintained by [Dustin Allen](#).  
This page was generated by [Oribub Pages](#).

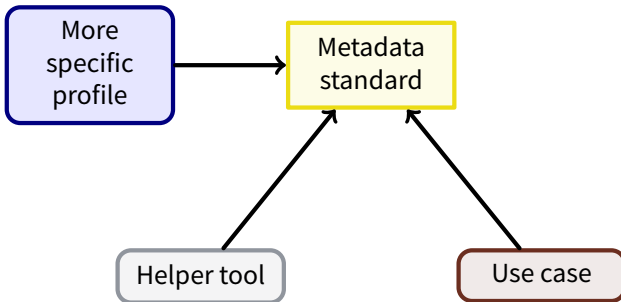
<http://www.dcc.ac.uk/resources/metadata-standards>

<http://rd-alliance.github.io/metadata-directory/>

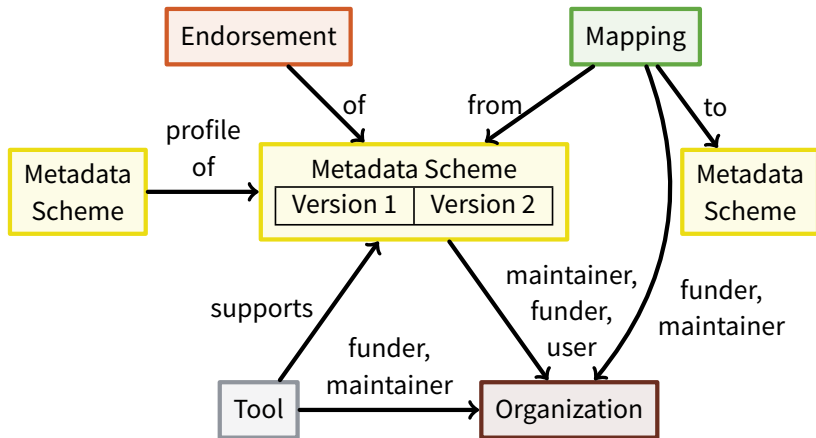
# So why do we need a new Catalog?

- › Search, not just browse
- › Access data with machine-to-machine protocols
- › Richer information
  - versions, mapping directionality, endorsements
  - greater use of entity relationships
- › More services
  - Extracting what you need from compliant metadata . . .
  - Calculating migration pathways . . .
  - Comparing elements in different schemes . . .
  - Generating ‘first-pass’ converters . . .

# Migrating the data: DCC/MSD data model



# Migrating the data: MSC data model



Metadata Standards Catalog

http://127.0.0.1:5000/

Search StartPage

Metadata Standards Catalog Search Sign in

# Metadata Standards Catalog

The RDA Metadata Standards Catalog is a collaborative, open directory of metadata standards applicable to research data. It is offered to the international academic community to help address infrastructure challenges.

## Metadata standards, profiles and schemes

- Browse by scheme name
- Browse by subject
- Search

## Metadata-related tools

- Browse by tool name

github @twitter linkedin facebook

Demo

data: master — DAG

ab318 :zsh — Konsole

File Edit View Bookmarks Settings Help

13:42:01 Thu 30 Mar 2017

ab318@refusis:~>

ab318 :zsh

# Future developments

GUI

Highlight standards bodies

GUI

Dynamic filtering while browsing

GUI

Side-by-side specifications

GUI

Version history as timeline

GUI

Search by article DOI

GUI

Show maturity rating for schemes

API

Make changes to database via API

API

Query standards by their elements

API

Query by element value encoding

API

Query by article DOI

API

Calculate crosswalks



## More information

- › Track progress against requirements:
  - [github.com/rd-alliance/metadata-catalog-dev/issues](https://github.com/rd-alliance/metadata-catalog-dev/issues)
  
- › View the new data model:
  - [github.com/rd-alliance/metadata-catalog-dev/tree/master/db](https://github.com/rd-alliance/metadata-catalog-dev/tree/master/db)
  
- › Try out a local instance of the prototype Catalog:
  - [github.com/rd-alliance/metadata-catalog-dev](https://github.com/rd-alliance/metadata-catalog-dev)



RESEARCH DATA ALLIANCE

Metadata  
Standards  
Catalog  
WORKING GROUP

Thank you for your attention

Metadata Standards Catalog Working Group: <https://rd-alliance.org/groups/metadata-standards-catalog-working-group.html>