



# Libraries for Research Data Interest Group

11th Plenary Meeting -- Berlin

23 March 2018

11:00 - 12:30

Slides: <https://goo.gl/EwYhhX>

Notes: <https://goo.gl/FNHzgK>

# L4RD Overview

Current Co-chairs: Andi Ogier, Birgit Schmidt, Juliane Schneider, Marta Teperek

Past Co-chairs: Kathleen Schearer, Michael Witt, Wolfram Horstmann

Wiki: <https://www.rd-alliance.org/node/1633/all-wiki-index-by-group>

- P2 Washington: First meeting as a BOF
- P3 Dublin: Research Data Skills in Libraries
- P4 Amsterdam: Research Data Solutions in Libraries
- P5 San Diego: Organizational Models for Data Services
- P6 Paris: Developing and Adapting to Research Data Policies
- P7 Tokyo: Applying Global Information-sharing and collaboration to Local Practice
- P8 Denver: International Data Week
- P9 Barcelona: Bringing Research Data Management into the Library Mainstream
- P10 Montréal: Realities and Assessment of Library Data Services
- P11 Berlin: From data services to research partnerships: Libraries facilitating knowledge creation

# Today's Agenda

1. Welcome and Introductory Remarks (10 min)
2. Working with Disciplinary Communities (35 min)
  - a. Chris Erdmann, NCSU: Outcomes of study on data science in libraries
  - b. Marta Teperek, TU Delft: Data Stewards
  - c. Natasha Simons, ANDS: Working with Disciplinary Communities in Australia
  - d. Irena Vipavc, CESSDA: Expert Tour Guide
3. BRAINSTORMING Topics (20 min)
4. Summaries from Breakouts (10 min)
5. Next Steps & Planning for P12 (5 min)



Burton, Matt and Lyon, Liz and Erdmann, Chris and Tijerina, Bonnie (2018) **Shifting to Data Savvy: The Future of Data Science In Libraries**. Project Report. University of Pittsburgh, Pittsburgh, PA.

[Abstract](#) | [PDF](#)

IMLS RE-43-16-0149-16



Data&Society





# Data Stewardship at TU Delft – case study



# About me



# Data Stewardship at TU Delft

Slides are available:

<https://doi.org/10.5281/zenodo.1205243>





Four major principles:

Excellence, Impact,  
Engagement and **Openness**

Impact for a  
better society

TU Delft Strategic Framework 2018-2024

# Good data management is a necessary prerequisite to Open Science





# Strategic support for Data Stewardship

Central funding to kick-start Data Stewardship at TU Delft

- 3 years: start of 2018 - end of 2020

# Key principles behind the project

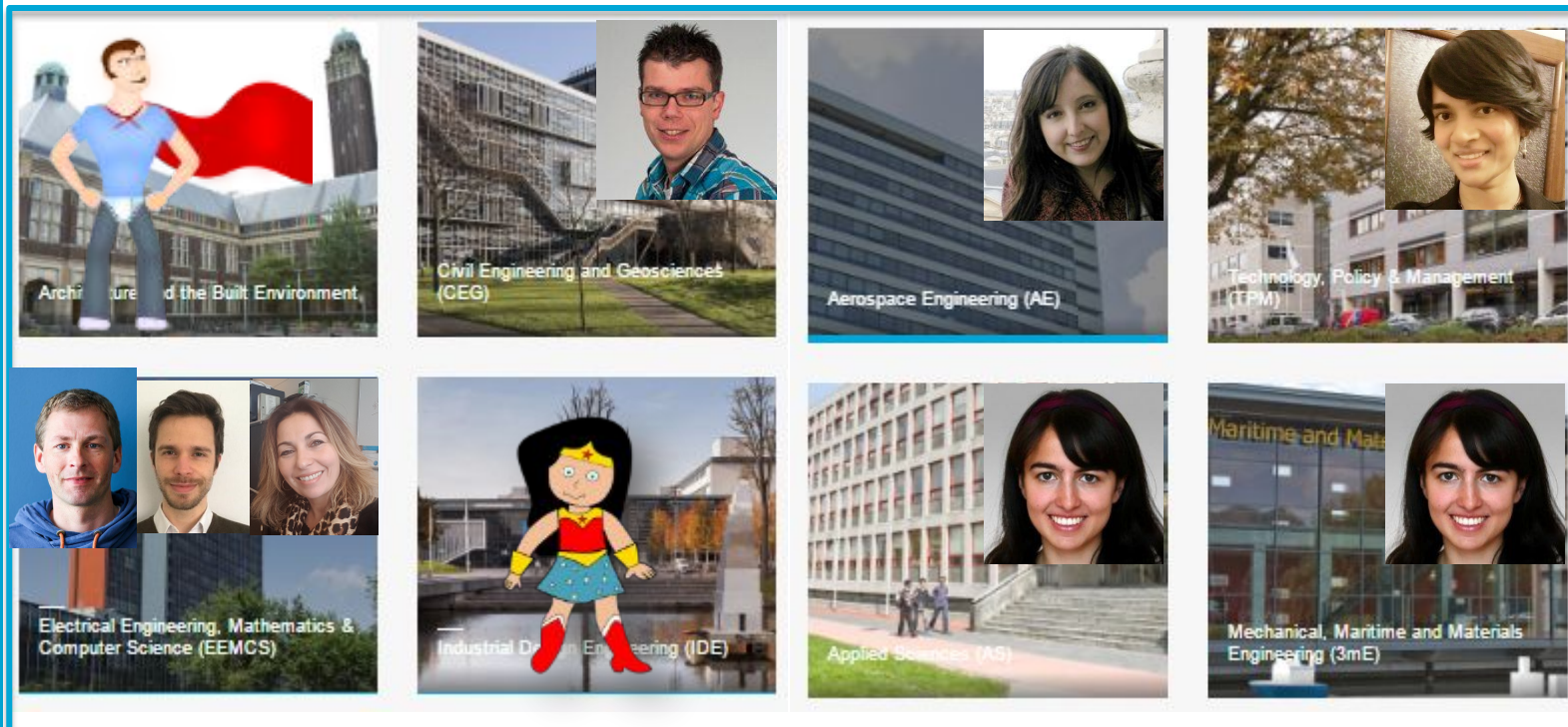
- Research is central
- Data stewards are consultants, not police!
  - Objective: improve culture (not compliance)





# Research is central: importance of disciplinary support

Subject-specific Data Steward at every Faculty



Is one data steward per faculty enough?...  
Let's have a community of Data  
Champions!



# Data Stewardship – working openly

## Open Working

An Experiment in Open Working from 4TU.Centre for Research Data & TU Delft Research Data Services (Note! This is a test site)

[HOME](#)[ABOUT OPEN WORKING AT TU DELFT](#)[DRAFT DATA MANAGEMENT PLAN CATALOGUE](#)[DATA STEWARDSHIP](#)[CONTACT](#)

## Data Stewardship

*This page gathers all the news and updates about the Data Stewardship project for improved navigation and visibility.*

### Project deliverables

- [Data Management survey results at the Faculty of Aerospace Engineering](#) – by Heather Andrews, published on 14 February 2018
- [Do as you preach: results of 2017 data management survey now published](#) – by Jasper van Dijck, published on 7 February 2018
- [Views on Data Stewardship – report of preliminary findings at TPM faculty](#) – by Marta Teperek, published on 29 January 2018
- [3 months' Data Stewardship Progress Report at the Faculty of Civil Engineering and Geosciences](#) – by Kees den Heijer, published on 28 November 2017
- [1.5 months' Data Stewardship Progress Report at the Faculty of Aerospace Engineering](#) – by Heather Andrews, published on 28 November 2017
- [4 months' Data Stewardship Progress Report at the Faculty of Electrical Engineering, Mathematics and Computer Science](#) – by Munire van der Kruijk-Delibay, Robbert Eggermont and Jasper van Dijck, published on 28 November 2017
- [Update on the Data Stewardship project at TU Delft: 3 months' progress report](#) – by Alastair Dunning and Marta Teperek, published on 28 November 2017

### Project updates and planning

- [5 Data Steward Positions](#) – by Marta Teperek, published on 29 October 2017

# And happy to share experiences 😊



MAY  
24

## Towards cultural change in data management - data stewardship in practice

by Research Data Services, TU Delft  
Library

Free



REGISTER

### DESCRIPTION

- How to achieve cultural change in research data management?
- Why is good data stewardship important?
- Why do we care and why should researchers care?

During this event, we will explore these issues. First, Danny Kingsley from the University of Cambridge will speak about

### DATE AND TIME

Thu, May 24, 2018  
9:30 AM – 6:00 PM CEST  
[Add to Calendar](#)

### LOCATION

<http://bit.ly/24mayOpenDay>



# Invitation to collaborate

Challenge: How to know if the approach helps achieve cultural change?



# Challenge: Does the approach offer good value for money?

- TU Delft:
  - central library support + dedicated Data Stewards
- École polytechnique fédérale de Lausanne
  - national support, central support + liaison librarians
- Cambridge
  - central support + data champions

# Would this RDA group be interested in taking this further?

- Could we compare different models of engagement?
  - Are there differences?
  - Pros and cons? Value for money?
  - Suitability to different settings?
- Could we at least collect case studies with innovative approaches to data stewardship?



# Questions? Feedback? Suggestions?

[m.teperek@tudelft.nl](mailto:m.teperek@tudelft.nl)

[@martateperek](#)

\  
Slides:

<https://doi.org/10.5281/zenodo.1205243>

# Short survey to assess data management culture

- Collaboration: TU Delft, EPFL, Cambridge and Illinois
- Based on the Data Asset Framework principle, but substantially shortened
- Internal and external benchmarking tool
  - Re-do on a regular basis

# Short survey to assess data management culture

- 10 short, compulsory questions
  - + institution-specific questions on top
- 5 mins to complete the survey

## Primary questions

1. Is your research data automatically backed up? (*compulsory, multiple choice*)

- Yes
- Not sure
- No

2. Did you lose any research data in the past year? (*compulsory, multiple choice*)

- Yes
- Not sure
- No

3. How frequently do you have problems finding a specific research data file in your collection? (*compulsory, multiple choice*)

# The tool & data are publicly available

The screenshot displays the OSFHOME web interface. At the top, a dark navigation bar contains the OSFHOME logo, a user profile for 'Marta Teperek', and links for 'My Quick Files', 'My Projects', 'Search', 'Support', and 'Donate'. Below this is a light-colored secondary navigation bar with a search bar and links for 'Files', 'Wiki', 'Analytics', 'Registrations', 'Contributors', 'Add-ons', and 'Settings'. The main content area features the project title 'Quantitative assessment of research data management practice' with buttons for 'Make Private', 'Public', '0', and social sharing icons. Below the title, it lists contributors, creation and update dates, a 'Create DOI' link, and a category of 'Project'. A description states it is a survey tool for assessing research data management practice, licensed under CC-BY Attribution 4.0 International. The page is divided into two columns: the left column has a 'Wiki' tab with the heading 'What is this quantitative assessment of research data management practice?' and a brief description; the right column has a 'Citation' tab showing the URL 'osf.io/mz3fx' and a 'Components' section listing the project as a 'Survey: research data management practice' by Teperek, Krause, Lambeng & 9 more.

OSFHOME ▾ My Quick Files My Projects Search Support Donate Marta Teperek ▾

Quantitative assessment of research da... Files Wiki Analytics Registrations Contributors Add-ons Settings

Quantitative assessment of research data management practice

Make Private Public 0 + ↻

Contributors: [Marta Teperek](#), [Jan Krause](#), [Nathalie Lambeng](#), [Eliane Blumer](#), [Jasper van Dijck](#), [Robbert Eggermont](#), [Munire van der Kruyk](#), [Kees den Heijer](#), [Heather Andrews](#), [Jasmin K. Böhmer](#), [Maria J. Cruz](#), [Marta Busse-Wicher](#), [Lauren Cadwallader](#)

Date created: 2018-01-02 10:05 AM | Last Updated: 2018-02-07 12:03 PM

Create DOI

Category: 📁 Project

Description:

Description of a survey tool to enable quantitative assessment of research data management practice

License: CC-BY Attribution 4.0 International

Wiki

What is this quantitative assessment of research data management practice?

This tool for the quantitative assessment of research data management practice consists of ten primary questions about researchers' data management practice. These ten primary questions can be substituted with

Citation osf.io/mz3fx ▾

Components Add Component Link Projects

🕒 Survey: research data management practice ...

Teperek, Krause, Lambeng & 9 more



# Building skills in disciplinary communities in Australia

*Natasha Simons*

Libraries 4 Research Data IG, RDA Plenary 11

Berlin, 23 March 2018



# The ANDS/RDS/Nectar partnership

- Australian National Data Service (ANDS)
- Research Data Services (RDS)
- National eResearch Collaboration Tools and Resources (Nectar)

\*All funded by the Australian Government through the National Collaborative Research Infrastructure Strategy (NCRIS) program

## Our aims

Our aims are to make significant progress on four key transformations of the Australian research sector:

- ✓ **A world leading data advantage**
- ✓ **Accelerated innovation**
- ✓ **Collaboration for borderless research**
- ✓ **Enhanced translation of research**

<https://www.ands-nectar-rds.org.au/>

# The ANDS/RDS/Nectar partnership

Our programs for 2017/18 include:

- **Research Domain Program:** Responding to research domain and research community data infrastructure needs.
- **Research Data Platforms:** Underpinning compute, storage and services infrastructure to support the data and informatics needs of Australian research and industry.
- **Sector-wide support and engagement:** Planning, coordination and leadership to further policy development, international engagement, progress a national skills strategy and support the building and sharing of data assets across the sector.

# Skills, Policy and Resources program

**Focus:** skills for research data and skills to use research infrastructure

**Target audience:** librarians, researchers, research support staff, technical analysts, research software engineers and more...

- **Skills development** e.g. ANDS 23 (Research Data) Things, Data Science Winter School, Train the (data) Trainer workshops series, webinars on topical issues e.g. trusted data repositories, data visualisation,
- **Policy** e.g. contribute responses to funder and government policy briefs; international policy development e.g. via RDA groups
- **Resources development** e.g. Guides and website resources
- **Support communities of practice** e.g. DMP IG. Monthly Tech Talks

<http://www.ands.org.au/working-with-data/skills>



# From 23 to 10 (discipline) Things

- 23 (Research Data) Things

*Available to reuse, repurpose*

- 10 Health and Medical Things

*Developed by ANDS, Nectar, RDS*

- 10 Marine Science (Research Data) Things

*Developed by librarians at Edith Cowan University, Western Australia*

- 10 Astronomy Things

*Developed by Astronomy Australia Limited's ADACS (Astronomy Data and Computing Services)*

<http://www.ands.org.au/working-with-data/skills/23-research-data-things>

# The Data Enhanced Virtual Laboratory (DEVL) and Research Data Cloud (RDC) Programs: 2017-2018

## DEVL (\$440K)

**Geosciences**

**Marine**

**Terrestrial Ecosystems**

**Molecular Bioscience**

**Astronomy**

**Climate**

**Humanities and Social Sciences**

**Characterisation (Materials)**

## RDC (\$600K)

**Terrestrial Ecosystems**

**Marine**

**Agriculture**

**Bioscience**

**Health**

# Delivering domain skills via funded projects

Example: Ecology skills

## Champions Program

*Training via a 2-day workshop developing tools and knowledge to use research infrastructure to explore species data and their relationships with their environment. The champions will incorporate these in their work and re-deliver education materials in their own institutions.*

## Digital Pathways series

*EcoEd provides cohesive training and skill development to university lecturers and researchers enabling them to combine theoretical concepts with real-world applications into undergraduate and postgraduate curriculum.*

## Top 10 Eco Science Things

*Available publicly for anyone to use*

<http://www.tern.org.au/EcoEd-training-for-first-rate-science-education-bgp4248.html>

# Delivering domain skills via funded projects

Example: Bio Science skills

## FAIR Data Training

*Will be delivered to project team. Training via 3 x zoom (virtual) sessions to “community hubs”. Session 1 on Findable, Accessible. Session 2 on Interoperable, Reusable. Session 3 hands-on workshop: how to make the Bio Science infrastructure platforms more FAIR.*

## Train the Trainer program

*To expand data literacy for biologists, the roll-out of a combined face to face and virtual training program (using local trainers that have been previously been trained and a lead trainer leading a national session virtually with participating sites - as developed previously by the EMBL-ABR network: the “Apollo model”)*

## Self-paced materials

*The development of further self-paced online training material through the development of at least one MOOC-like Online Course.*



# Some learnings so far

- Identify domain needs in conjunction with domain partner institutions, domain researchers
- Develop training materials in conjunction with domain partners
- Test training materials with domain researchers
- Think about what success looks like and how to measure it

# Thank you!

## Natasha Simons

Program Leader, Skills Policy and Resources | Australian National Data Service  
Industry Fellow | The University of Queensland

T: +61 7 3346 9991 | E: [natasha.simons@ands.org.au](mailto:natasha.simons@ands.org.au) | W: [ands.org.au](http://ands.org.au)  
ORCID: <https://orcid.org/0000-0003-0635-1998> Tw: @n\_simons



ANDS, Nectar and RDS are supported by the Australian Government through the National Collaborative Research Infrastructure Strategy Program (NCRIS).

With the exception of third party images or where otherwise indicated, this work is licensed under the Creative Commons 4.0 International Attribution Licence.

**NCRIS**  
National Research  
Infrastructure for Australia  
An Australian Government Initiative

cessda eric

Consortium of European Social Science Data Archives  
European Research Infrastructure Consortium

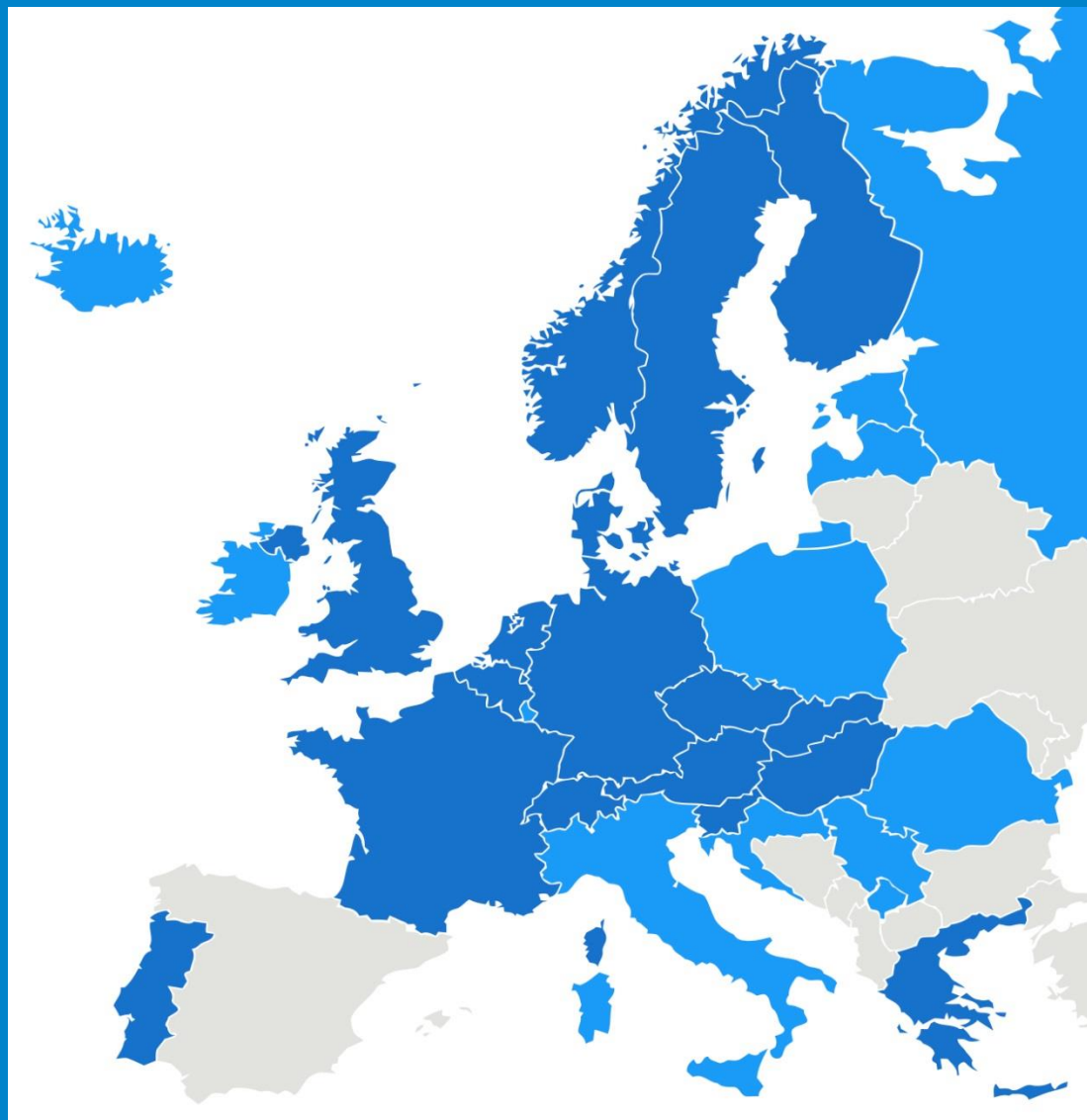
# Training at CESSDA: Involvement of librarians

Irena Vipavc Brvar

*CESSDA Training WG Leader*



# European Diversity of CESSDA SPs



Consortium of European Social Science Data Archives

3 primary communities:

- Data producers
- Data users
- Professionals at Service Providers

-> Train the research community throughout the research lifecycle.

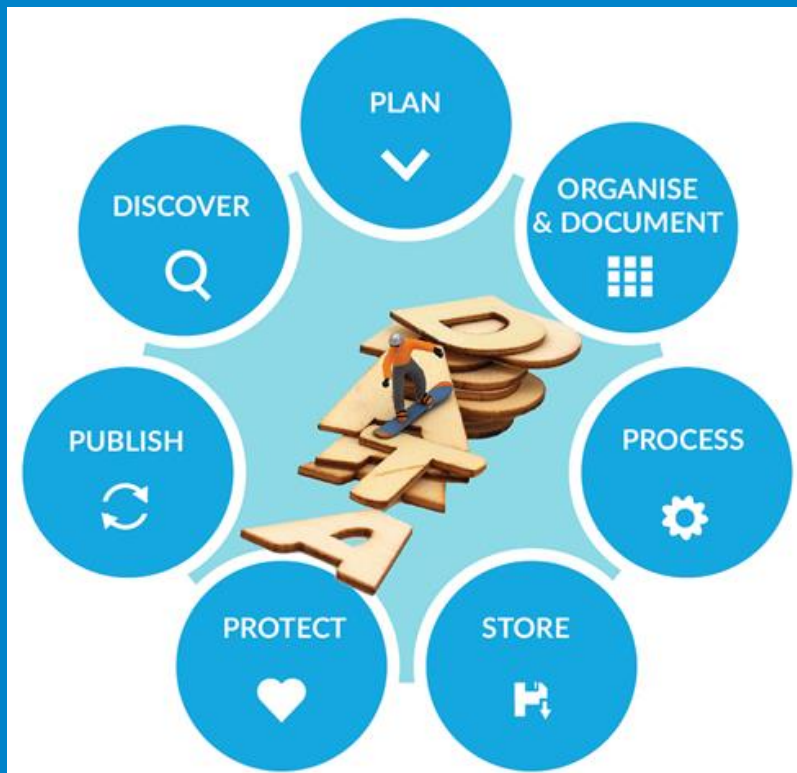
■ **Members**  
■ **Partners**

16 +1

cessda eric



# Expert tour guide on Data Management



Presentations  
and exercises

social scientists



Local diversity



Expert tips

[cessda.eu/DMGuide](https://cessda.eu/DMGuide)

Librarians could  
Support researchers

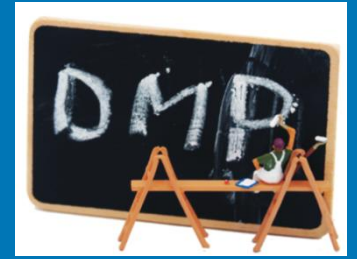
**Obstacles:**

- lack knowledge
- confidence
- overloaded



cessda eric

# Role of librarian in RDM



- Provides information about the availability of existing data sources.
- Supports preparation of formal DMPs.
- Provides information about options to deposit data in a data centre or data archive.
- Provides information about open access conditions and advantages.
- Provides support with preparation of basic study metadata and documentation, author's rights, and explains other deposition requirements.
- Provides information about accessioning datasets into a bibliographic system for the purpose of scientific evaluation and resource discovery.
- Provides data citation guidance.
- Provides information about linking data with publications and research projects.



# Future events and work

**RDM Expert Tour Guide: Train the Trainers Workshop / 12 – 13 April / Ljubljana, Slovenia**

**Local RMD training events**

**CESSDA Workshop: Exploring data in Europe - with a focus on European attitudes and Value / 29 May / Prague, Czech Republic**

**Data Discovery workshop at 3 summer schools**

**CESSDA Data Catalogue**

**CESSDA Knowledge Platform**



**Training**

---

Training focuses on 'train the trainers' and new modes of sharing expertise

cessda eric

# Brainstorming Session 30 minutes

- Introduction to Discussion Format (<5 min)
- Breakout (20 minutes) to brainstorm:
  - Topics
  - Formats (Webinar, Papers, Working Group)
  - Activities/Deliverables (Outputs)

## Topic suggestions from survey:

- Incentive strategies for building University RDM
- Effective outreach/needs assessment

## Output suggestions from survey

- Recommendations on customizing (library RDM) services for different disciplines