



# Registering converters in the Metadata Standards Catalog

Alex Ball

University of Bath

RDA 17th Plenary Meeting, Edinburgh (Virtual)  
20 April 2021

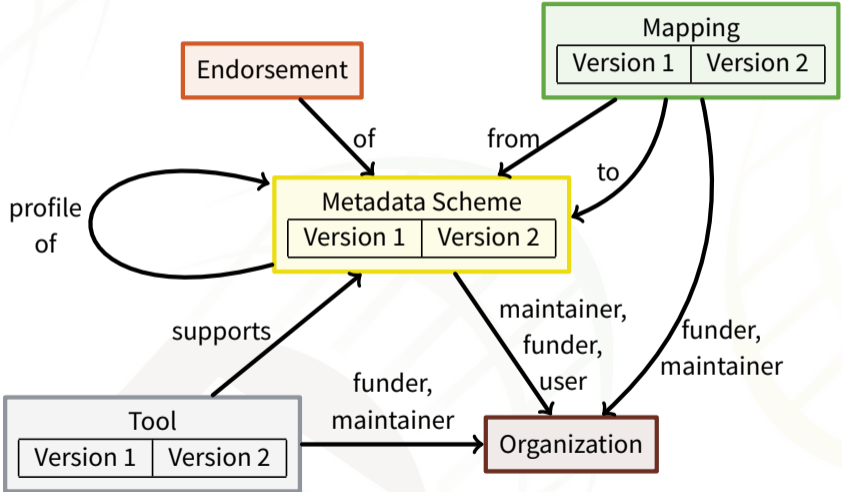


## Timeline

- 2012-05 DCC Disciplinary Metadata Catalogue proposed
- 2013-01 **DCC Disciplinary Metadata Catalogue launched**
- 2013-10/2013-12 RDA Metadata Standards Directory WG runs survey, adds 18 standards/profiles, 13 metadata tools to DCC Disciplinary Metadata Catalogue
- 2014-03 New community-maintained **Metadata Standards Directory launched** on GitHub
- 2016-01 RDA Metadata Standards Catalog WG endorsed
- 2017-07 Prototype Metadata Standards Catalog complete
- 2017-12 **Metadata Standards Catalog v1 launched** on DCC servers
- 2019-03 Metadata Standards Catalog v1 migrated to Bath servers
- 2020-04 Work begins on Metadata Standards Catalog v2
- 2020-09 **Metadata Standards Catalog v2 launched**



# Data model: main entities





## Data model: Mappings

### Properties

name  
description  
locations  
identifiers  
creators\*

### Version properties

number  
note  
issued  
locations  
identifiers

### Relations

input schemes  
output schemes  
maintainers  
funders

\* Not a property in reality, but implemented as one for practical reasons.

**locations** Specification document; web application; service endpoint; library (programming language); executable (platform).



# Mappings displayed in the Catalog

Metadata Standards Catalog

[Search](#) [My profile](#) [Sign out](#)

## SPASE Data Model to Dublin Core

This XML Stylesheet transformation provides a simple mapping from the SPASE Data Model to the OAI-PMH profile of Dublin Core. A textual description of the mapping is available from the Internet Archive Wayback Machine.

### Supported metadata standards

This mapping can be used to convert records in the following metadata schemes...

- [SPASE Data Model](#)

...into records that comply with the following metadata schemes:

- [Dublin Core](#)

### Links and documentation

[Download library \(XML\)](#)

[View documentation](#)

### Identifiers

Internal MSC ID [msc:c24](#)

Metadata Standards Catalog

[Search](#) [My profile](#) [Sign out](#)

## Index of mappings

- [ABCD \(Access to Biological Collection Data\) to Darwin Core](#)
- [CSDGM Extensions for Remote Sensing Metadata to ISO 19115](#)
- [DDI \(Data Documentation Initiative\) to Dublin Core](#)
- [DIF \(Directory Interchange Format\) to Dublin Core](#)
- [DIF \(Directory Interchange Format\) to ISO 19115](#)
- [Darwin Core to ABCD \(Access to Biological Collection Data\)](#)
- [DataCite Metadata Schema to DDI \(Data Documentation Initiative\)](#)
- [DataCite Metadata Schema to Dublin Core](#)
- [DataCite Metadata Schema to IDF \(International DOI Foundation\) Metadata Kernel](#)
- [DataCite Metadata Schema to OECD Dataset Metadata](#)
- [Dublin Core to MARC \(Machine-Readable Cataloging\)](#)
- [Dublin Core to MODS \(Metadata Object Description Schema\)](#)
- [Dublin Core to PROV](#)
- [Dublin Core to RIF-CS \(Registry Interchange Format - Collections and Services\)](#)
- [EML \(Ecological Metadata Language\) to ISO 19115](#)
- [EURISCO Descriptors to ABCD \(Access to Biological Collection Data\)](#)
- [FGDC/CSDGM \(Federal Geographic Data Committee Content Standard for Digital Geospatial Metadata\) to DIF \(Directory Interchange Format\)](#)



## Still to come

- 🌐 Normalized expressions of metadata standards in terms of Metadata Interest Group Recommended Metadata Element Set
- 🌐 Comparison of normalized expressions of metadata standards
- 🌐 Automated generation of converters between metadata standards via Metadata Interest Group Recommended Metadata Element Set



## Thank you for your attention

Metadata Standards Catalog Working Group:

<https://rd-alliance.org/groups/metadata-standards-catalog-working-group.html>

Metadata Standards Catalog: <https://rdamsc.bath.ac.uk/>