



Welcome to RDA for Newcomers!

RDA Virtual Plenary 17

20 - 23 April 2021



Organised by



Jisc



I would like to begin by acknowledging the Traditional Owners of the lands on which we all live and work. I pay my respects to their Elders, past, present, and emerging.



Agenda 8 April, 6:00 UTC

1. Welcome and housekeeping - Stefanie Kethers, RDA Director of Operations
2. Welcome to RDA and RDA Governance - Hilary Hanahoe, RDA Secretary General
 - Mingfang Wu (IG & WG Co-Chair, TAB member)
3. How RDA works - Stefanie Kethers
 - Working and Interest Groups and Communities of Practice
 - Peter Neish (WG & IG Co-Chair)
 - Outputs, Recommendations and Adoption
 - Ingrid Dillo (COVID-19 WG Co-Chair, IG Chair, Council member)
4. How to make the most of the RDA Virtual Plenary - Stefanie Kethers
 - Maria Tsagiopoulou (Early Career and Engagement IG Co-Chair)
5. Q&A

Mute during presentations



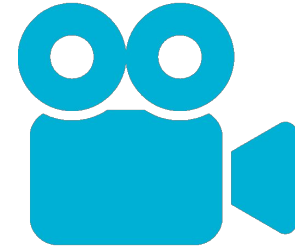
unmute if you'd like to talk

For questions & comments



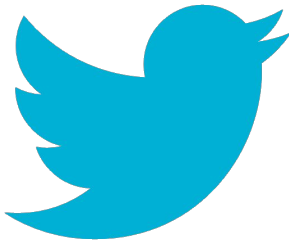
*use the Chat box
or raise your hand*

Turn on your video

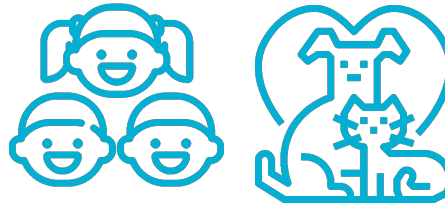


*if you feel comfortable
and have the bandwidth*

#RDAPlenary



We welcome little people



& pets

Come prepared to contribute



and have fun!



Please go to www.menti.com

and use the code

6714 9510



The Research Data Alliance: What it does and how it is governed

Hilary Hanahoe

Secretary General, Research Data Alliance (RDA)



Vision

Researchers and innovators openly **share** and **re-use** data across **technologies, disciplines, and countries** to address the grand challenges of society.

Mission

RDA builds the **social** and **technical** bridges that enable open sharing and re-use of data.

THE RESEARCH DATA ALLIANCE

www.rd-alliance.org

building the social and technical bridges that enable open sharing and re-use of data

50 FLAGSHIP OUTPUTS

including 8 ICT Technical Specifications (standards)

140+ ADOPTION CASES

across multiple disciplines, organisations

97 GROUPS WORKING ON GLOBAL DATA INTEROPERABILITY CHALLENGES

40 Working Groups
57 Interest Groups

11,615 INDIVIDUAL MEMBERS FROM 146 COUNTRIES

69% Academia & Research
14% Public Administration
11% Enterprise & Industry

49 ORGANISATIONAL MEMBERS
12 AFFILIATE MEMBERS



RESEARCH DATA ALLIANCE

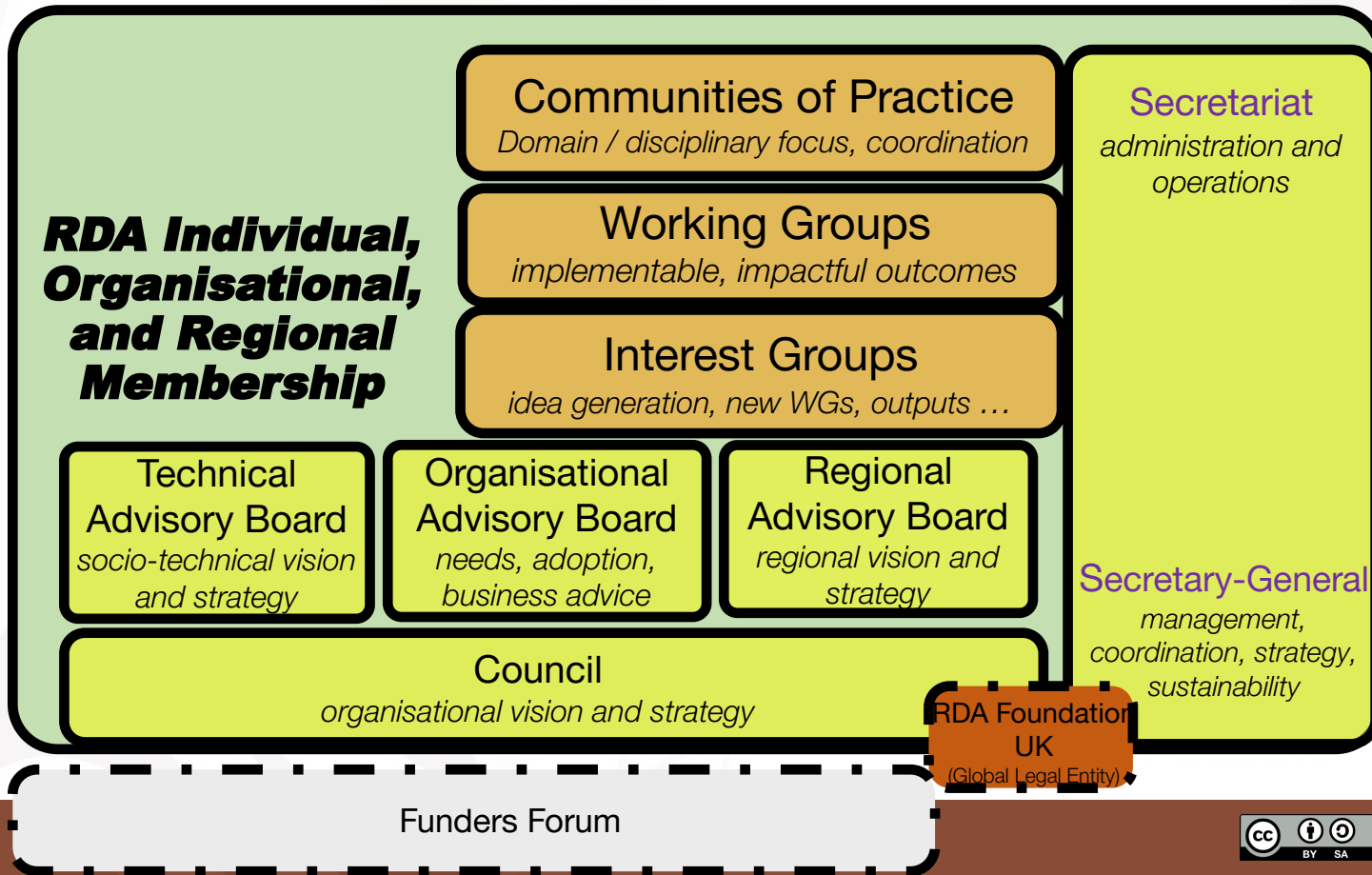
GUIDING PRINCIPLES

- **OPENNESS** – RDA community meetings and processes are open, and the deliverables of RDA Working Groups will be publicly disseminated.
- **CONSENSUS** – The RDA moves forward by achieving consensus among its membership. RDA processes and procedures include appropriate mechanisms to resolve conflicts.
- **INCLUSIVE** – The RDA seeks to ensure broad, balanced and inclusive representation of its membership and stakeholder communities.
- **HARMONIZATION** – The RDA works to achieve harmonization across data standards, policies, technologies, infrastructure, and communities.
- **COMMUNITY-DRIVEN** – The RDA is a public, community-driven body constituted of volunteer members and organisations, supported by the RDA Secretariat.
- **NON-PROFIT AND TECHNOLOGY-NEUTRAL** - The RDA does not promote, endorse, or sell commercial products, technologies, or services and the development of open and re-usable recommendations and outputs within the RDA is mandatory.





RDA Global Governance





How the Research Data Alliance Works

Working and Interest Groups
and Communities of Practice



The Heart of RDA...

**... are the RDA Working and Interest Groups
and Communities of Practice**



How Do WGs and IGs Work?

- A number of people from different backgrounds, regions, etc. coming together to work on a specific topic
- 2-4 Co-chairs facilitate the group
- Regular virtual meetings / teleconferences
- Meetings at Plenaries
 - Working meetings
 - Joint sessions with other groups



Working Groups (WGs)

- 12-18-month lifespan
- Develop and implement specific tools, code, best practices, standards, etc.
- Outputs include:
 - Adoptable and adopted **Recommendations**
 - Supporting Outputs (optional)
- Group members should include adopters from the start



Interest Groups (IGs)

- No specific lifespan – some have been around since 2013
- Platform for interested people to come together
- May act as an umbrella group for several Working Groups, e.g. Agricultural Data IG (IGAD)
- Possible Outputs include WGs, Supporting Outputs, etc.



Communities of Practice (CoPs)

- No specific lifespan, but reviewed every 18 months
- Discipline / research area focus
- Based on mature RDA IGs and / or WGs
- Need to show support from relevant stakeholder organisations
- Produce new WGs & IGs, build bridges across RDA and externally, with relevant communities.
- Also produce public reports to the RDA community



The Heart of RDA ...

Working Groups (WGs)	Interest Groups (IGs)	Communities of Practice (CoPs)
Develop and implement tools, policy, practices & products for data management that are adopted and used by projects, organisations, communities.	Focus on solving a specific data sharing problem and identifying what kind of infrastructure needs to be built.	Investigate, discuss and provide knowledge and skills within a specific discipline and / or research domain. Coordination and awareness raising role, “umbrella group”.
Duration: 12-18 months	Duration: ongoing while IG is active	Duration: ongoing, but reviewed every 18 months
Outputs: Recommendations - concrete deliverables e.g. “Running code”, tools, standards, etc.	Outputs: Possibly case statements for new WGs, guidelines, best practice, reports, etc.	Outputs: New WGs & IGs, bridge building across RDA and externally.

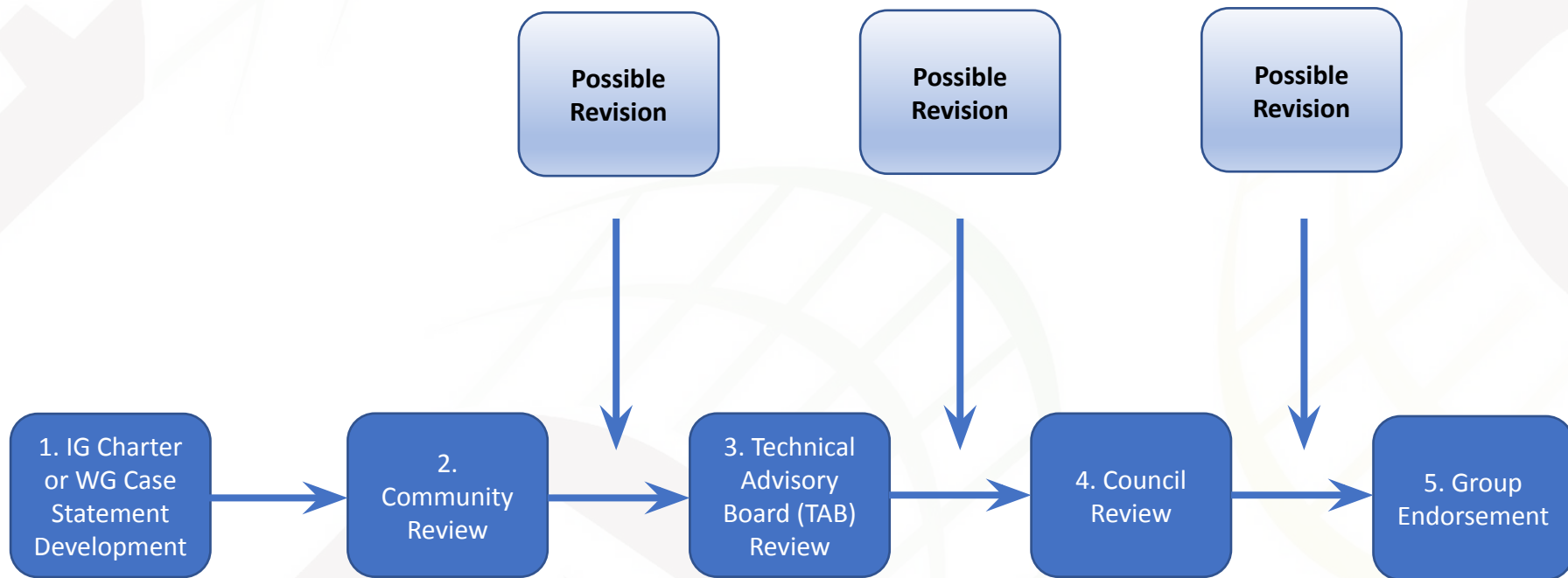


Starting an Interest or Working Group

- Any RDA member can start an IG or WG
 - By using “Initiate New Group” in the “Groups” menu
 - By requesting and running a Birds of a Feather (BoF) session at a Plenary
- Before starting an IG or WG
 - Please make sure the proposed topic is not already being addressed in an existing IG or WG
 - Each RDA group needs to follow the RDA Guiding Principles – see <https://www.rd-alliance.org/about-rda>
 - Check out our [primer for RDA group chairs](#)
 - Check out the pages on Creating or Joining an RDA [IG](#) or [WG](#)



Endorsement Process for IGs and WGs





Finding RDA Groups

ABOUT RDA ▾ GET INVOLVED ▾ **GROUPS** ▾ RECOMMENDATIONS & OUTPUTS ▾ RDA FOR DISCIPLINES ▾ PLENARIES & EVENTS ▾ NEWS & MEDIA ▾



RDA for you - search your groups

[Home](#) » [Groups](#) » [Creating and Managing RDA Groups](#) » [RDA for you - search your groups](#)

The Research Data Alliance accomplishes its mission primarily through **Working Groups and Interest Groups**.

In order to allow new members to understand what technical and social infrastructure solutions RDA groups are developing, and which scientific disciplines may benefit of RDA Group outcomes, this filter has been created to allow you identify which RDA group(s) might be more useful for your research.

Groups can be selected according to their **focus** [1], that is: what problem they try to solve, and/or according to the **scientific domains** [2] in which their communities operate.

Select the desired fields from the boxes on the right and identify RDA groups for your; then you only need to join them!

NB: This page only shows the current RDA Working and Interest Groups that have been tagged with "Main focus" and "Domain / field of expertise". You can find a complete list of the current RDA Working and Interest Group [here](#).

Find your RDA Group



Main Focus

Select All

- ☐ Data Management
- ☐ Data Collection
- ☐ Data Description
- ☐ Identity, Store, and Preserve
- ☐ Disseminate, Link, and Find
- ☐ Policy, Legal Compliance, and Capacity
- ☐ Not applicable

Domain/Field of Expertise

- ☐ Social Sciences
- ☐ Natural Sciences
- ☐ Engineering and Technology
- ☐ Medical and Health Sciences
- ☐ Agricultural Sciences
- ☐ Humanities

Domain Agnostic

- ☐ Domain Agnostic

WG	Discipline-specific Guidance for Data Management Plans WG	WG	FAIRsharing Registry: connecting data policies, standards and databases RDA WG
WG	Metadata Standards Catalog WG	WG	Preserving Scientific Annotation WG
WG	RDA-COVID19-Software	WG	RDA/FORCE11 Software Source Code Identification WG
WG	Working Group on Ethical and Legal best practices for Drone Data in a global research context (WELDD)		
IG	Metadata IG	IG	RDA/CODATA Materials Data, Infrastructure & Interoperability IG
IG	Research Data Management in Engineering IG	IG	Sensitive Data Interest Group
IG	Virtual Research Environment IG (VRE-IG)		

[1] Some other teams have undertaken similar activities, such as the view available at https://suave-dev.sdsc.edu/main/file=zaslavsk_RDA_Groups_June_2018.csv&views=1110001&view=bucket
[2] "Fields of R&D classification" as indicated in the Frascati Manual 2015: Guidelines for Collecting and Reporting Data on Research and Experimental Development, Published by the OECD

rd-alliance.org/rda-for-you



How the Research Data Alliance works

Outputs and Recommendations



Types of RDA Outputs

- Recommendations
 - Produced by RDA Working Groups
 - Formal endorsement process
 - Official, endorsed results of RDA
 - Need to be adoptable and adopted
- Supporting Outputs
 - Produced by RDA Working or Interest Groups
 - Undergo community review
 - Useful solutions, but don't have to show adoption
- Other Outputs
 - Resources requested by a Working Group or Interest Group to be published on the RDA website
 - No level of endorsement



A Closer Look at RDA Recommendations

- “Flagship outputs” - official, endorsed results of RDA
- Every WG should develop at least one
- May include specifications, taxonomies or ontologies, workflows, schemas, data models, etc.
- Comparable to other organisations’ “specifications” or “standards”
- Have RDA DOI minted
- After endorsement: published in *RDA Official Documents* collection in Zenodo



A Closer Look at RDA (Supporting) Outputs

- Supporting Outputs
 - Useful solutions from RDA WGs and IGs
 - May not be as clearly adoptable by organisations as RDA Recommendations
 - Have RDA DOI minted
 - After successful community review: published in *RDA Official Documents* collection in Zenodo
- Other Outputs
 - May be published in *RDA Related Documents* collection in Zenodo



Outputs Catalogue

Outputs & Recommendations

[Home](#) » [Recommendations & Outputs](#) » [Outputs & Recommendations](#)

RDA Outputs are the technical and social infrastructure solutions developed by RDA Working Groups or Interest Groups that enable data sharing, exchange, and interoperability.

These Outputs have an important impact in two areas: solving problems, and incorporation and/or adoption in infrastructure environments by individuals, projects and organisations. As an organisation, RDA's goal is to expand awareness and adoption of these Outputs, and hence their impact, within all regions of the world. RDA Outputs are products of the respective Working or Interest Group and should be demonstrably developed and endorsed by the group. Each Output should have the respective Working or Interest Group listed as an author where appropriate.

RDA Outputs are classified as **RDA Recommendations** (official, endorsed results of RDA Groups), **Supporting Outputs** (useful solutions from our RDA Working and Interest Groups) or **other Outputs** - more information can be found at <https://www.rd-alliance.org/recommendations-outputs>. **They are all listed below and can be searched according to their focus, scientific domain, or by status using the filters on the right.** Filters can be combined, too (if more than one filter is selected, results sum up).

Search for Recommendations & Outputs



You can also browse the full list
by clicking on the "table view" icon below

Number of results: 49



Search by Status

- ☐ RDA Endorsed Recommendations
- ☐ Recommendations with RDA Endorsement in Process
- ☐ RDA Supporting Outputs

Search for Topics

Select All

- ☐ Data Management
- ☐ Data Collection
- ☐ Data Description
- ☐ Identity, Store, and Preserve
- ☐ Disseminate, Link, and Find
- ☐ Policy, Legal Compliance, and Capacity

Primary Domain

Select All

- ☐ Social Sciences
- ☐ Natural Sciences
- ☐ Engineering and Technology
- ☐ Medical and Health Sciences
- ☐ Agricultural Sciences
- ☐ Humanities

Domain Agnostic

- ☐ Domain Agnostic

<https://www.rd-alliance.org/recommendations-and-outputs/catalogue>



Adoption Stories

- Documented cases of adoption

- What was the challenge?
- What Output did you adopt?
- How did you do this?
- What were the benefits?
- What did you learn?



- Check out the [list of adoption stories](#) and the [playlist of adoption videos](#)
- Have you adopted an RDA output? [Tell us](#) about your experience!



RDA COVID-19 Initiative



Ingrid Dillo

RDA Newcomers Session

8 April 2021



rd-alliance.org



[@resdatall](#) | [@rda_europe](#) | [@RDA_US](#)





RDA COVID-19 response

- Call to action European Commission -> fast track Working Group aimed at developing a system for **data sharing in public health emergencies**
- Recommendations and guidelines:
 - detailed **guidelines** to help **researchers** and **data stewards** follow best practices to maximise the efficiency of their work, and to act as a blueprint for future emergencies;
 - **recommendations** to help **policymakers** and **funders** to maximise timely, quality data sharing and appropriate responses in such health emergencies.





Community Effort

- Around 600 RDA members and newcomers registered
- 160+ active contributors to the documents
- Experts in the different fields as group moderators
- Wider engagement: weekly webinars, requests for comments

RDA's guiding principles:

- Openness
- Consensus
- Inclusive
- Harmonization
- Community-driven
- Non-profit and technology-neutral



What are the Challenges Being Faced?



Critical Need for Rapid Data Sharing

Rapid massive research response with diverse outputs challenges **interoperability of data**.

A trade off between...



Timeliness

Precision



Lack of Harmonised Universal Standards and Context

Lack of pre-approved sharing agreements and archaic information systems hinder rapid threat detection and evidence-based response.

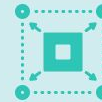
No universally adopted system or standard for



collecting



documenting



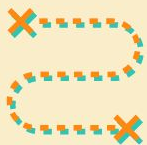
disseminating

COVID-19 research outputs.



Lack of documentation, context, and appropriate licensing challenges **reusability**.

What are the Objectives?



1.0

Clearly define detailed guidelines on data and software sharing for COVID-19 research.



1.1

Help stakeholders follow best practices to **maximise efficiency**.



1.2

Act as a **blueprint** for future emergencies to maximise the efficiency of their work.



2

Develop **recommendations** for funders and policymakers to maximise timely, quality data and software sharing and appropriate responses in health emergencies.



3

Address interests of researchers, policymakers, funders, publishers, and providers of data sharing infrastructures.

Global Effort to Raise the Bar for Data Sharing



- 117 cross-sectoral signatories to the [Wellcome Trust statement](#) in January 2020.
- Agreement by 30 leading publishers on [immediate open access](#) to COVID-19 publications and underlying data.

A Collaborative Cross-Disciplinary Effort



CLINICAL

- i** Standardise terminologies, and find balance between timely data sharing and protecting privacy, confidentiality
- ★** Organise data sharing and trial documents in trustworthy repositories



OMICS

- i** Select the best data formats and standards to fit the sub-discipline
- ★** Promote use of domain-specific repositories to enable standardisation



EPIDEMIOLOGY

- i** Data models must include clinical data, disease milestones, indicators, reporting data, contact tracing and personal risk factors
- ★** Incentivise publication of situational data, analytical models, scientific findings and reports



SOCIAL SCIENCES

- i** Enable interoperable cross-disciplinary, cross-cultural data use and collaboration
- ★** Ensure robust funding streams for research aimed at understanding and managing the human aspects of the pandemic



COMMUNITY

- i** Encourage public and patient involvement throughout data management lifecycle
- ★** Balance between timely testing and contact tracing, emergency response, community safety, and individual privacy concerns



RESEARCH SOFTWARE

- i** Software used in data analysis must be able to reproduce results, if necessary
- ★** Allocate financial resources to support development and maintenance of new research software



INDIGENOUS DATA GUIDELINES

- i** Indigenous governance of data collection, ownership, and sharing and use priorities is the central principle of Indigenous data sovereignty
- ★** CARE Principles set minimum standards for collectors, users, and stewards of Indigenous data.



LEGAL AND ETHICAL CONSIDERATIONS

- i** Although the law provides the foundation for data handling, ethical frameworks should also inform expedited approval to maximise data use and sharing
- ★** Expedite ethical review and approval for legal data sharing during a pandemic



Output

- 143 pages with 4 page Executive Summary and many more outputs
- see: The Value of RDA for COVID-19 <https://www.rd-alliance.org/value-rda-covid-19-0>

- RDA COVID-19 Recommendations and Guidelines for Data Sharing, final release, published 30 June 2020
- RDA COVID-19 Recommendations and Guidelines for Data Sharing Infographic
- RDA COVID-19 Guidelines and Recommendations - the prior 5 releases
- RDA-COVID19 WG Zotero Library
- DS Wizard Navigation Tool for the RDA COVID-19 Recommendations
- MindMap Navigation Tool for the RDA COVID-19 Recommendations

Policy brief for Funders

<https://www.rd-alliance.org/system/files/RDA%20COVID-19%20WG%20Recommendations%20to%20Funders.pdf>



What are the Key Recommendations?

The RDA COVID-19 Recommendations and Guidelines are aimed at developing a systematic approach for data sharing in public health emergencies that supports scientific research and policymaking, including an overarching framework, common tools and processes, and principles that can be embedded in research practice.

1 Coordinate cross-jurisdictional efforts to foster global **Open Science** through policy and investment.

2 Incentivise early publication and release of data and software outputs.

3 Invest in state-of-the-art IT, data management systems **infrastructure, economies of scale, and people.**

4 Data, software and models should be **timely and FAIR:** Findable, Accessible, Interoperable, Reusable.

5 Require the use of **Data Management Plans.**

6 Use common generic as well as domain-specific **metadata standards, and persistent identifiers.**

7 Provide **documentation** of context, methodologies used to define, construct, and compile data, data cleaning and quality checks, data imputation, and data provenance.

8 Use **Trustworthy Data Repositories** committed to the long-term preservation and sustained access to their data holdings.

9 **Expedite** article and data review processes, **prioritising** and **fast-tracking data** at all stages.

10 **Balance ethics and privacy,** taking into account public interests and benefits while addressing the health crisis.

11 Access should be as **open as possible** and as **closed as necessary.**

12 Seek **technical solutions** that ensure anonymisation, encryption, privacy protection, and de-identification to **increase trust** in data sharing.

13 Provide **legal frameworks that promote sharing** of surveillance data across jurisdictions and sectors.

A Collaborative Cross-Disciplinary Effort



CLINICAL

- i** Standardise terminologies, and find balance between timely data sharing and protecting privacy, confidentiality
- ★** Organise data sharing and trial documents in trustworthy repositories



OMICS

- i** Select the best data formats and standards to fit the sub-discipline
- ★** Promote use of domain-specific repositories to enable standardisation



EPIDEMIOLOGY

- i** Data models must include clinical data, disease milestones, indicators, reporting data, contact tracing and personal risk factors
- ★** Incentivise publication of situational data, analytical models, scientific findings and reports



SOCIAL SCIENCES

- i** Enable interoperable cross-disciplinary, cross-cultural data use and collaboration
- ★** Ensure robust funding streams for research aimed at understanding and managing the human aspects of the pandemic



COMMUNITY

- i** Encourage public and patient involvement throughout data management lifecycle
- ★** Balance between timely testing and contact tracing, emergency response, community safety, and individual privacy concerns



RESEARCH SOFTWARE

- i** Software used in data analysis must be able to reproduce results, if necessary
- ★** Allocate financial resources to support development and maintenance of new research software



INDIGENOUS DATA GUIDELINES

- i** Indigenous governance of data collection, ownership, and sharing and use priorities is the central principle of Indigenous data sovereignty
- ★** CARE Principles set minimum standards for collectors, users, and stewards of Indigenous data.



LEGAL AND ETHICAL CONSIDERATIONS

- i** Although the law provides the foundation for data handling, ethical frameworks should also inform expedited approval to maximise data use and sharing
- ★** Expedite ethical review and approval for legal data sharing during a pandemic



Omics Example: 4.4.2 Guidelines for Host Genomics Data

Several different types of host genomics data are being collected for COVID-19 research. Some suitable repositories for these are:

1. **Gene expression data** should in general be retrieved from or deposited in the repositories listed below ([Blaxter et al., 2016](#)). To achieve load balancing, it is recommended to choose the respective regional repository. It should be noted that [INSDC](#) resources (i.e., [DDBJ](#), [ENA](#) and [NCBI](#)) synchronise most of their datasets daily².
 - 1.1. Transcriptomics of human subjects (requiring authorised access):
 - 1.1.1. [Database of Genotypes and Phenotypes](#) (dbGaP) ([Mailman et al., 2007](#))
 - 1.1.2. [European Genome-Phenome Archive](#) (EGA) ([Lappalainen et al., 2015](#)); the corresponding non-sensitive metadata will be available through EBI [ArrayExpress](#) ([Athar et al., 2019](#))
 - 1.1.3. [Japanese Genotype-phenotype Archive](#) (JGA) ([Kodama et al., 2015](#))
 - 1.2. Transcriptomics (from cell lines/animals):
 - 1.2.1. [ArrayExpress](#) ([Athar et al., 2019](#))
 - 1.2.2. [Gene Expression Omnibus](#) ([Barrett et al., 2013](#))
 - 1.2.3. [Genomic Expression Archive](#)
 - 1.3. Underlying reads can be retrieved from/will automatically be deposited to the corresponding read archive:
 - 1.3.1. [DDBJ Sequence Read Archive](#) (DRA) ([Kodama et al., 2012](#)), for submission documentation see [here](#)
 - 1.3.2. [European Nucleotide Archive](#) for submission documentation see [here](#)
 - 1.3.3. [NCBI Sequence Read Archive](#) (SRA) for submission documentation see [here](#)
 - 1.4. Microarray-based gene expression data:
 - 1.4.1. [ArrayExpress](#) ([Athar et al., 2019](#))
 - 1.4.2. [Gene Expression Omnibus](#) ([Barrett et al., 2013](#))





Impact

- More reusable and reproducible research outputs = better science
- More efficient ways to build on research outcomes = faster solutions
- Better return on investment for funded research = better arguments for funding & more resources
- Research outputs with extensibility into other domains and contexts = advance on other infectious diseases/health emergencies





Thank you for listening!

- Ingrid.dillo@dans.knaw.nl
- Website: www.rd-alliance.org
- Twitter: @resdatall
- Email: secretariat@rda-foundation.org






How to make the most of this Plenary



RDA Plenaries

- Take place twice per year in different countries
- Bring together several hundred participants from many different communities – now virtually
- Types of sessions at the Plenary:
 - Breakout sessions
 - Plenary sessions
- Also: Starting point for elections
 - Council (odd-numbered Plenaries) 
 - Technical Advisory Board (even-numbered Plenaries)



RDA Session Types

- Breakout sessions for groups to:
 - Advance their work
 - Explore synergies with other groups
 - Attract new members
 - Discuss new topics
 - Establish new groups
- Plenary sessions for RDA to:
 - Present Recommendations, Supporting Outputs, and Adoptions
 - Get feedback from the community
 - Hear keynote speakers and panelists on topics of interest
- Networking sessions for all attendees to connect with other RDA members
 - Q&A / Catch-up sessions to meet other RDA members, ask questions, share thoughts



Navigating the Programme

- More than 70 breakout sessions
 - Working Group sessions
 - Interest Group sessions
 - Joint Sessions
 - Birds of a Feather (BoF) sessions
- Support for finding your way:
 - Colour Coding
 - Plenary Pathways





What are BoFs?

- Birds of a Feather (BoF) sessions are meant to gauge interest in the proposed topic
- A BoF is a session at a Plenary, requested via the Call for Sessions
- Possible Outcomes: Participants decide to
 - work towards establishing a WG
 - work towards establishing an IG
 - not pursue the topic further



Colour Coding in the Programme

12:45 - 14:15 | **Breakout 4**

- BoF - Aligning Provenance Approaches Across Domains
- BoF - Challenges of Curating Data from Interdisciplinary and Collaborative Research
- BoF - Data Networks
- IC Education and Training on Handling of Research Data: Reducing Barriers to and Increasing Global Participation in Data Interchange through Advancing Discovery, Access, and Reusability of RDM Training Resources
- IG - Health Data: Achieving Anonymity and Correcting Bias with Synthetic Data through Generative AI
- IG - RDA/WDS Certification of Digital Repositories: From Principles to Metrics to Evaluation, Increasing TRUST in Data Repositories
- WC Brokering Framework: Preliminary Recommendations
- WC Data Citation: Adoption Meeting
- WG - Data Granularity
- WC FAIR for Research Software (FAIR4RS): Early Outcomes of the FAIR 4 Research Software: Definitions, Principles and Road Ahead
- WC International Benchmarking the Global Open Research Commons (GORC)



Colour Coding Legend

Interest Groups (IGs)

- ⊕ Not yet endorsed
- ✓ IG Established

Working Groups (WGs)

- ⊕ Not yet endorsed
- ✓ WG Getting started (approx. 0-6 months after endorsement)
- ⦿ WG Producing deliverables (approx. 6-12 months after endorsement)
- WG Wrapping up (from approx. 12 months after endorsement)
- 🔄 WG Maintaining deliverables (maintenance group)



Plenary Pathways

- Help you identify sessions related to these topics:
 - o The FAIR agenda
 - o Training and Data Management Planning
 - o Life Science Data Issues
 - o Semantics, Ontology, Standardisation
 - o Data infrastructures - Organisational to Global
 - o Data lifecycles - Versioning, Provenance, and Reward
 - o Professional Networking and Social Aspects
 - o Discipline Focused Data Issues
- <https://www.rd-alliance.org/rda-17th-plenary-pathways>





Plenary Pathways Example

Discipline Focused Data Issues

Tuesday, 20th April 2021, 10:15 - 11:45

B1, B10: BoF FAIR publishing of chemistry research data objects.

Friday, 23rd April 2021, 05:00 - 06:30

Tuesday, 20th April 2021, 10:15 - 11:45

B1: BoF Building a Common Ground for a FAIR Microstructure Repository

Tuesday, 20th April 2021, 12:45 - 14:15

B2: IG RDA/CODATA Materials Data, Infrastructure & Interoperability: Materials Data

Wednesday, 21st April 2021, 10:15 - 11:45

B3: IG - ESIP/RDA Earth, Space, and Environmental Sciences: Making Global Connections

Wednesday, 21st April 2021, 12:45 - 14:15

B4: IG - Interest Group on Agricultural Data (IGAD): A Roadmap for our Community of Practice

Thursday, 22nd April, 2021, 08:00 - 09:30

B6: Joint meeting - IG - International Indigenous Data Sovereignty and WG FAIR Data Maturity Model: Implementing the CARE Principles: The CARE-full Process

Thursday, 22nd April, 2021, 10:15 - 11:45

B7: IG Research Data Management in Engineering - Engineering RDM Initiatives

Thursday, 22nd April, 2021, 12:45 - 14:15

B8: IG Establishing a Sensitive Data Interest Group

Discipline Focused Data Issues

Tuesday, 20th April 2021, 10:15 - 11:45

B1, B10: BoF FAIR publishing of chemistry research data objects.

Friday, 23rd April 2021, 05:00 - 06:30

Tuesday, 20th April 2021, 10:15 - 11:45

B1: BoF Building a Common Ground for a FAIR Microstructure Repository

Tuesday, 20th April 2021, 12:45 - 14:15

B2: IG RDA/CODATA Materials Data, Infrastructure & Interoperability: Materials Data



Tips for Navigating the Plenary

- Pick a few areas of interest – see e.g. the [Plenary Pathways](#)
- If you are interested in a group:
 - Consider the colour coding
 - Look at the session description
 - Attend the group's session (and please sign in to the session)
 - Contact the group chairs
 - Join the group via the group's RDA page
- If you want to learn about RDA Outputs:
 - Join the Adoption and Outputs Plenary session on Wednesday, 21 April, 08:00 - 09:30 UTC
 - Check out WGs “Wrapping up” or “Maintaining deliverables”
 - Talk to the groups whose outputs you are interested in
- Check out the [poster](#) sessions and interact with the poster exhibitors
- Join in the [social events](#), and the 5 Q&A / Catch-up sessions listed in the [programme](#)



Further Information

For more information, including some videos, check out the *RDA for Newcomers* page:

<https://www.rd-alliance.org/about-rda/rda-newcomers>

RDA for Newcomers page for this Plenary:

<https://www.rd-alliance.org/rdas-17th-plenary-meeting-rda-newcomers>



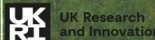
THANK YOU VERY MUCH!

RDA Virtual Plenary 17

20 - 23 April 2021



Organised by



Jisc

RDA

Email - enquiries@rd-alliance.org

Web - www.rd-alliance.org

Twitter - [@resdatall](https://twitter.com/resdatall)

LinkedIn -
www.linkedin.com/in/ResearchDataAlliance

Slideshare -
<http://www.slideshare.net/ResearchDataAlliance>

Stefanie Kethers

Director of Operations, Research Data Alliance

Email – Stefanie.Kethers@ardc.edu.au