

CASE: THE PROJECT MILDRED OVERVIEW OF THE APPLICATION AND SERVICE ARCHITECTURES

Project manager Ville Tenhunen
ville.tenhunen@helsinki.fi, @vtenhunen
University of Helsinki

19.9.2017 RDA 10th Plenary, BoF Systems, Technologies and Data Flows of the
Research Data

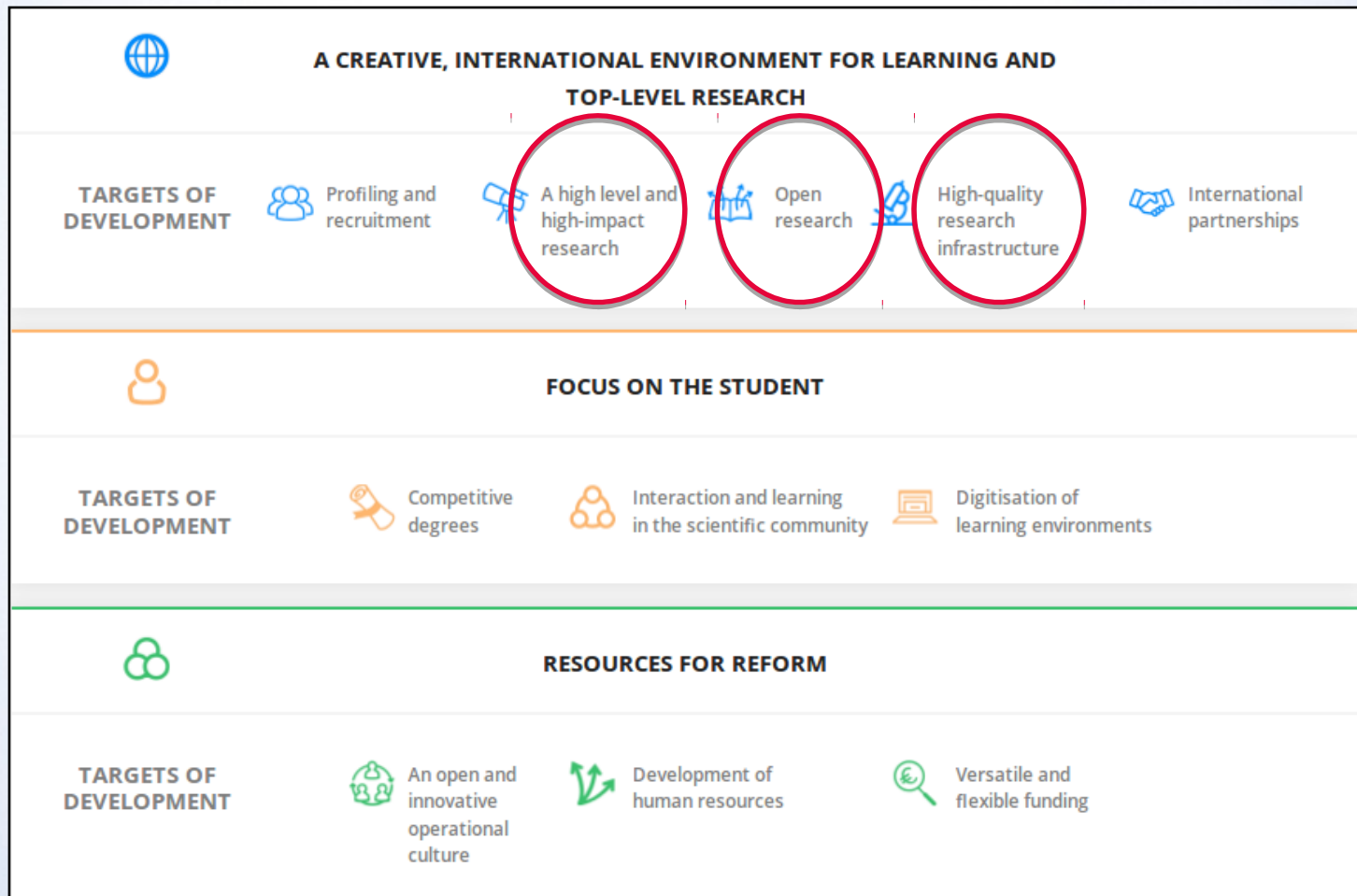
THE PROJECT MILDRED?

- MILDRED is the project for updating research data infrastructure of the University of Helsinki to provide tools and services for supporting the data management, use, discoverability and sharing of data, capacity for storage, preservation, computing and processing.
- The aim of MILDRED is to provide researchers with a state-of-the-art infrastructure and design data related services to help researchers.
- The infrastructure will be developed for and with researchers and user groups are pivotal in the development process and together with national and international parties.



HELSINGIN YLIOPISTO

STRATEGY 2017-2020



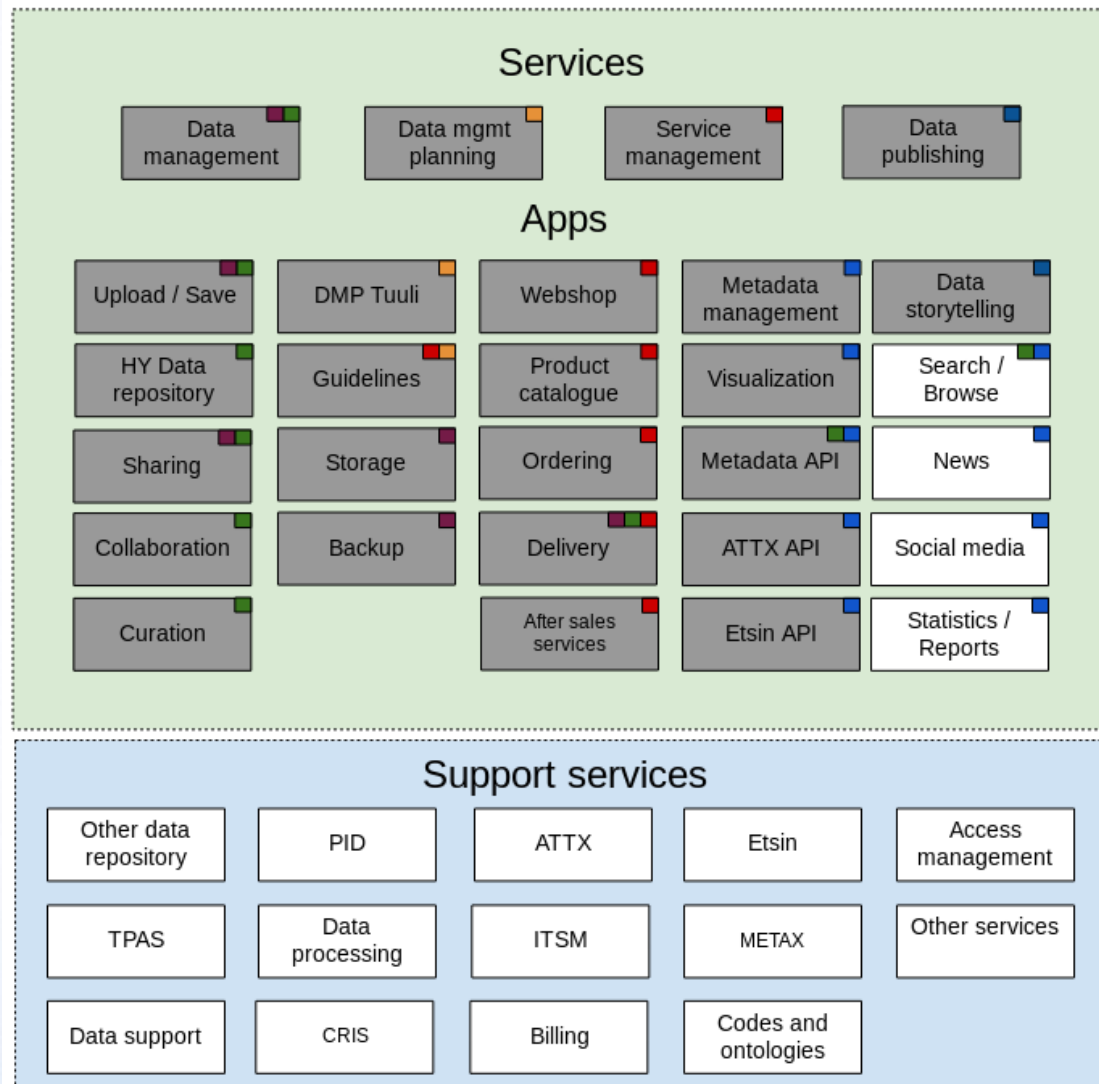
MILDRED SUBPROJECTS

1. Digitalization of Research Data Services Delivery
2. Data Repository Service
3. Data Publishing and Metadata Service
4. Data Storage and Backup
5. Implementation of Data Management Planning Tool - Tuuli

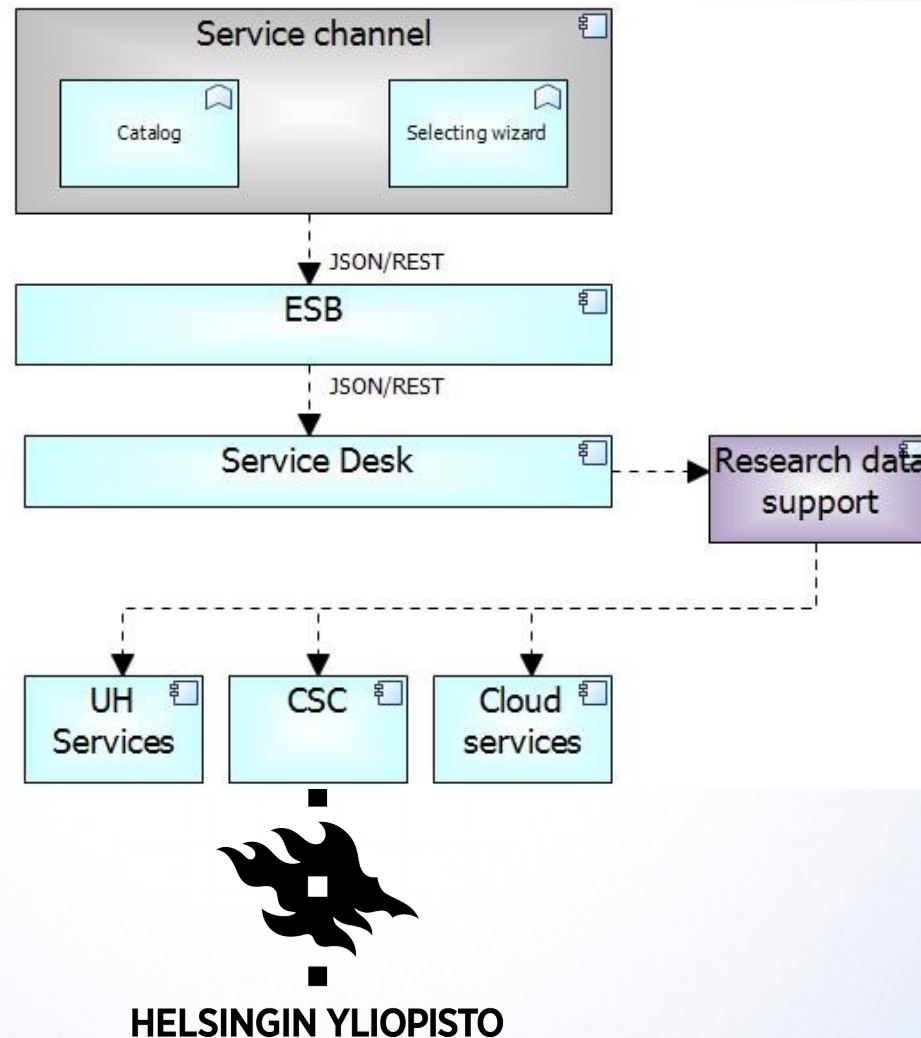


HELSINGIN YLIOPISTO

ARCHITECTURE



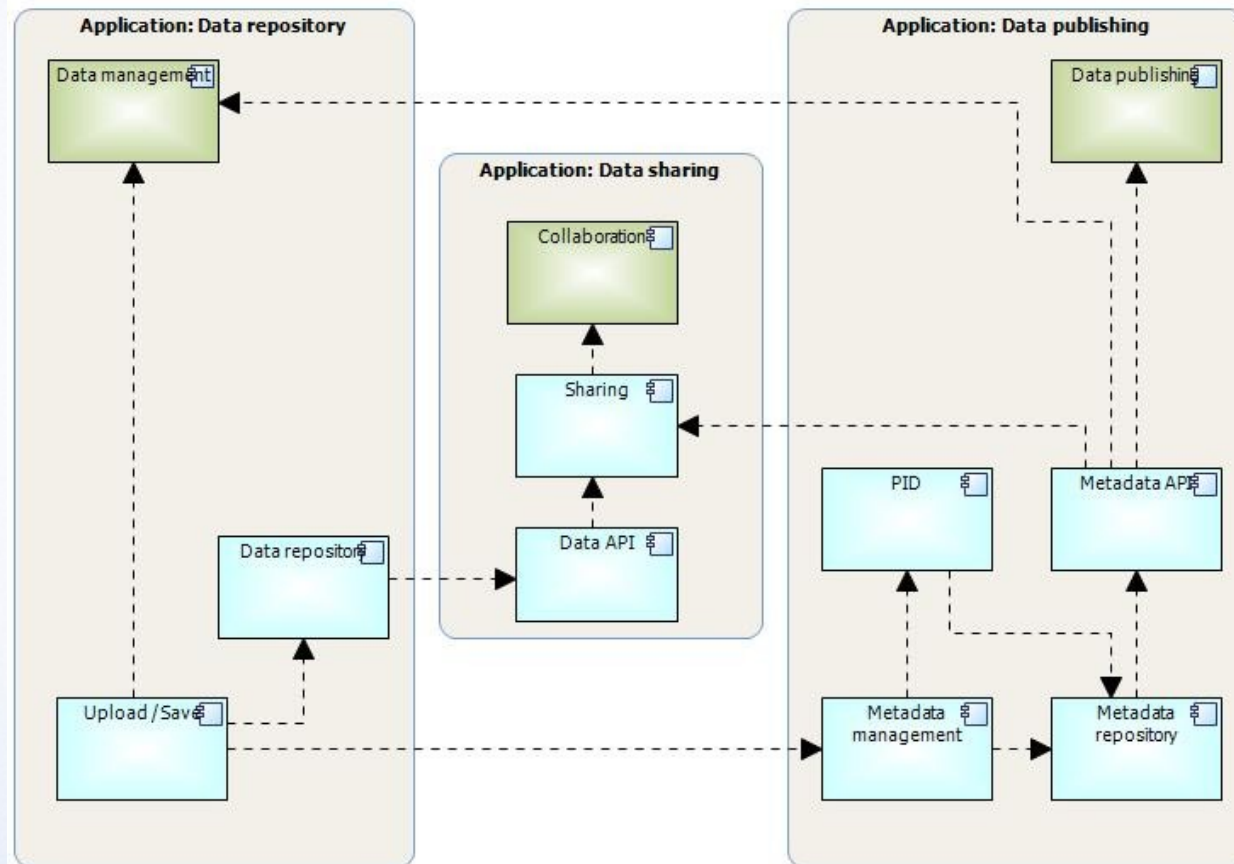
SERVICE CHANNEL



efecte

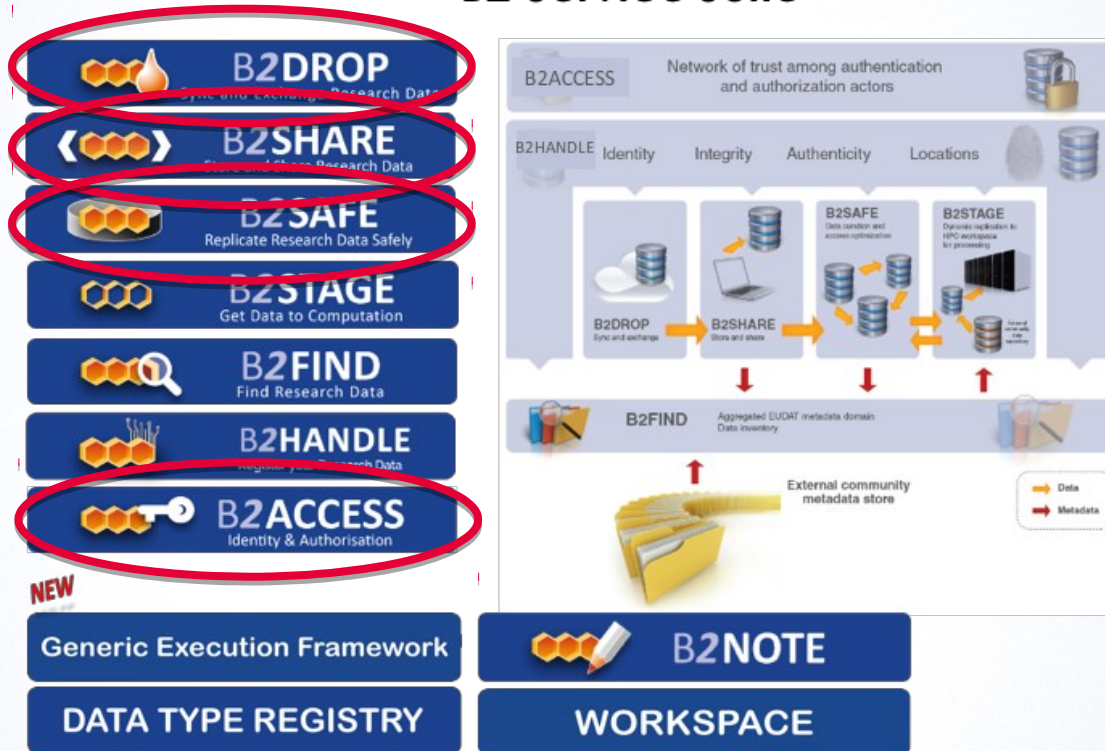
DATA SERVICE

MILDRED 2 data flow



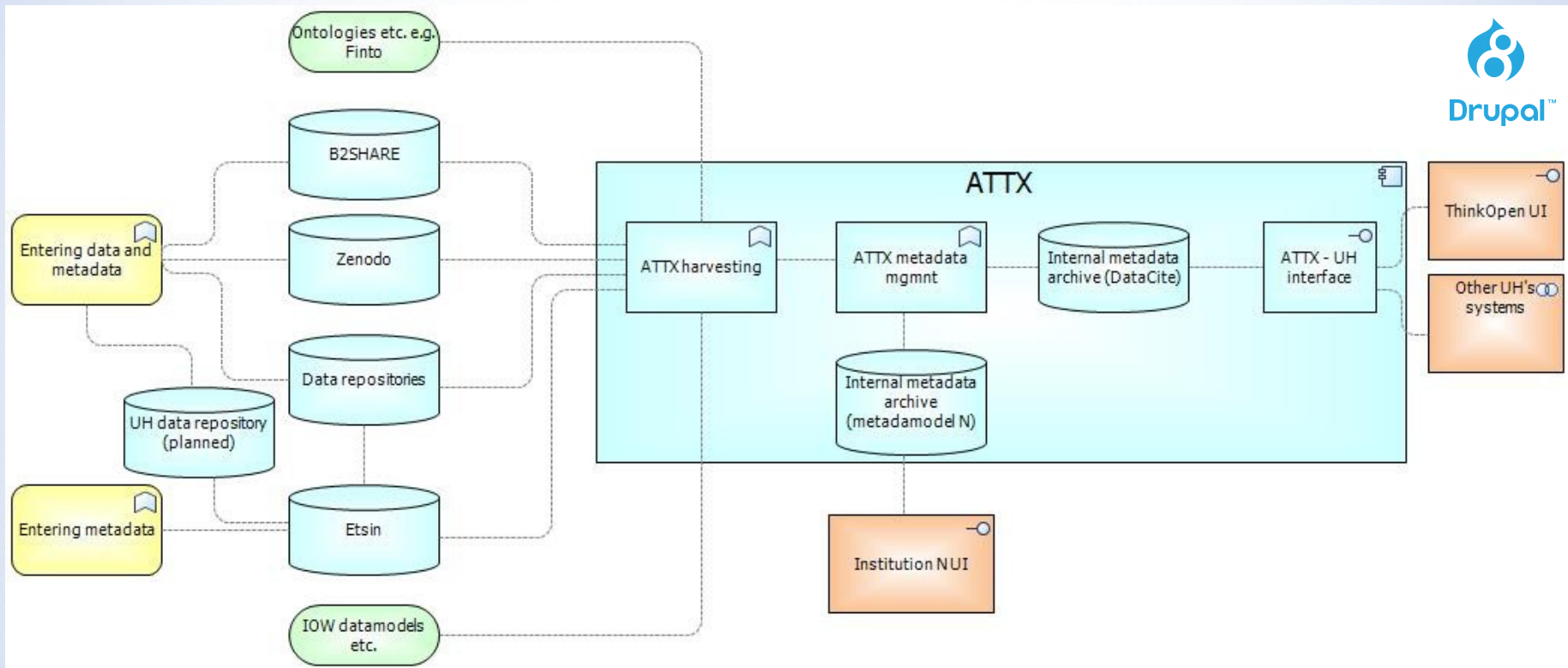
EUDAT

B2 Service Suite

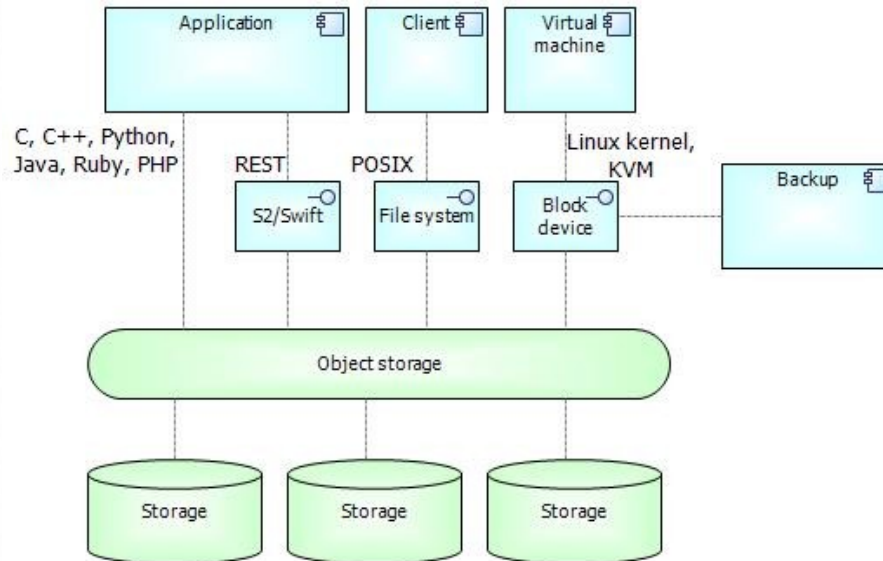


HELSINGIN YLIOPISTO

METADATA AND PUBLISHING



STORAGE AND BACKUP



HELSINGIN YLIOPISTO



DMP

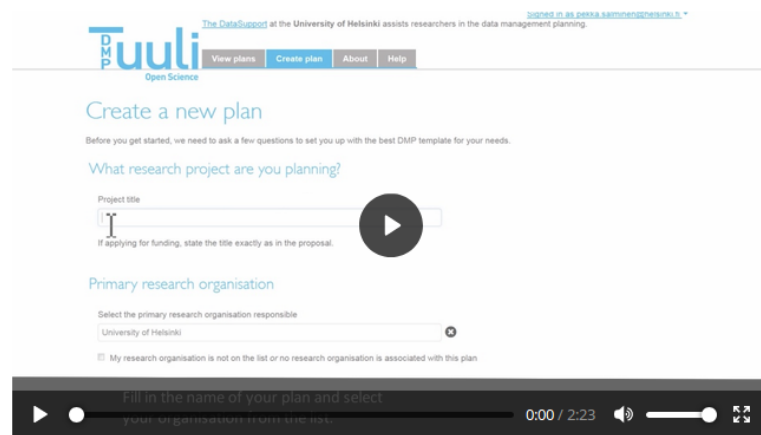


Home About Help

Welcome.

Data management planning tool Tuuli will help you write data management plans.

Screencast on how to use DMPTuuli



Sign in

Email address *

Password *

[Forgot your password?](#)

☐ Remember me

Sign in

Create account

New to DMPTuuli? Create an account today.

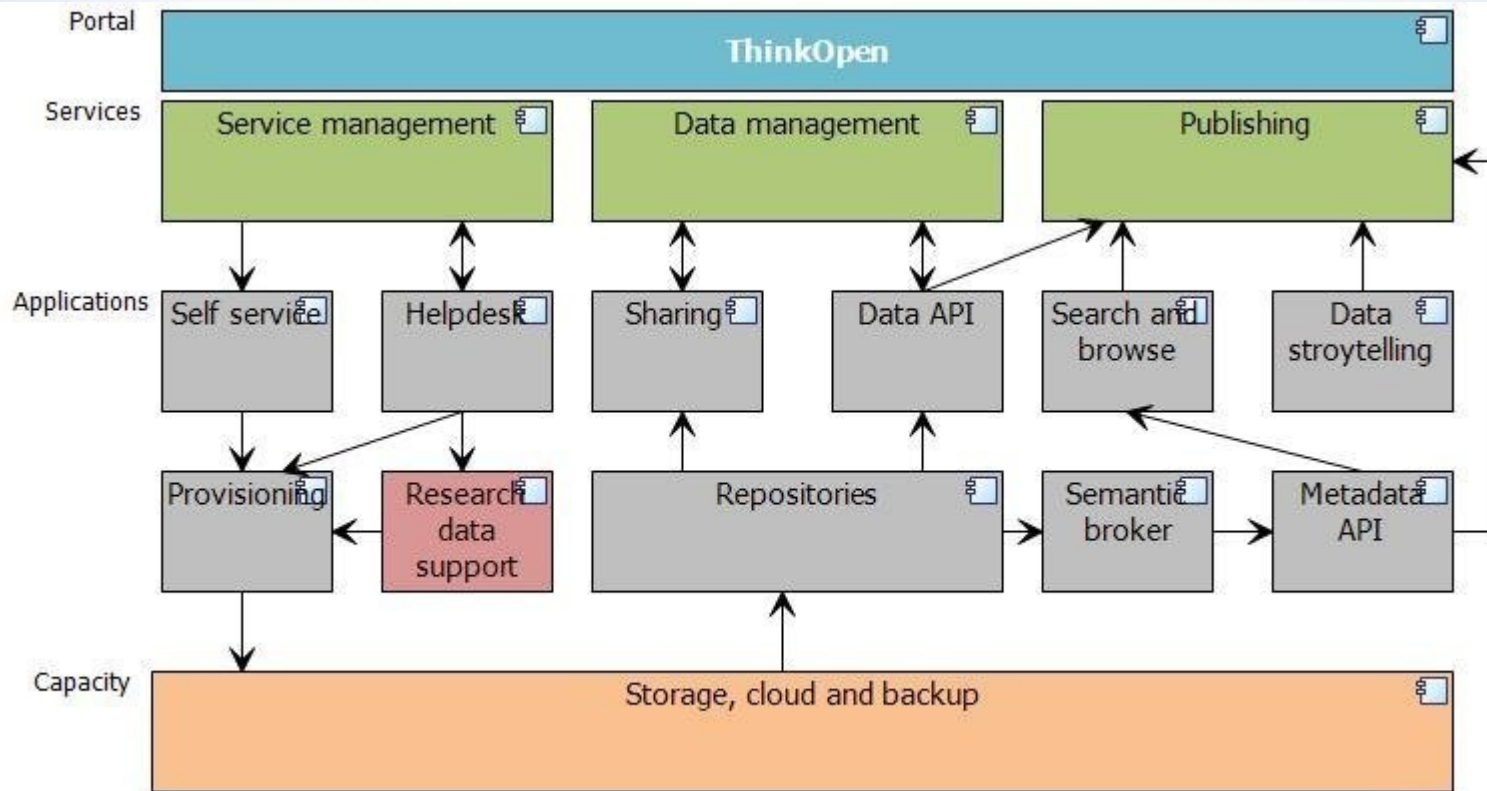
Contact us | Terms of use

© 2004 - 2017

Delivered by
D|C|C

Powered by
DMP
ONLINE

ONE PICTURE



HELSINGIN YLIOPISTO

MAIN CHALLENGES

- Seamless workflows and automated processes
- Semantic interoperability
- Service interoperability
- Technical interoperability



HELSINGIN YLIOPISTO

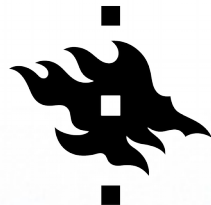
MORE INFORMATION

- Blog: <https://blogs.helsinki.fi>
- ThinkOpen: <https://www.helsinki.fi/en/research/think-open>
- @ProjectMildred



HELSINGIN YLIOPISTO

THANK YOU!



HELSINGIN YLIOPISTO