



United Nations  
Educational, Scientific and  
Cultural Organization



Memory of  
the World



UNIVERSITÀ  
DI PISA

*Inria*  
inventors for the digital world

Version 1.0

# The Software Heritage Acquisition Process



Software Heritage  
THE GREAT LIBRARY OF SOURCE CODE

## List of the authors

<b>Short title</b>	SWHAP
<b>Full title</b>	Software Heritage Acquisition Process
<b>Authors:</b>	Laura Bussi, Dept. of Computer Science, University of Pisa <l.bussi1@studenti.unipi.it> Roberto Di Cosmo, Software Heritage, Inria and University of Paris <roberto@dicosmo.org> Carlo Montangero, Dept. of Computer Science, University of Pisa <carlo@montangero.eu> Guido Scatena, Dept. of Computer Science, University of Pisa <guido.scatena@unipi.it>
<b>Date</b>	October 10, 2019
<b>Contact</b>	Roberto Di Cosmo <roberto@dicosmo.org>

**Abstract**

The source code of landmark legacy software is particularly important: it sheds insights in the history of the evolution of a technology that has changed the world, and tells a story of the humans that dedicated their lives to it.

Rescuing it is urgent, collecting and curating it is a complex task that requires significant human intervention.

This document presents the first version of SWHAP, the Software Heritage Acquisition Process: a protocol for the collection and preservation of software of historical and scientific relevance. SWHAP results from a fruitful collaboration of the University of Pisa with Software Heritage in this area of research, under the auspices of UNESCO, and has been validated on a selection of software source code produced in the Pisa area over the past 50 years.

**Acknowledgments** L. Bussi wants to acknowledge the Software Heritage Foundation for the scholarship that supported her work and the Department of Computer Science of the University of Pisa for hosting her while working on SWHAPPE.

**License** This work is distributed under the terms of the Creative Commons license CC-BY 4.0

## Contents

<b>1</b>	<b>Introduction</b>	<b>3</b>
<b>2</b>	<b>The process, abstract view</b>	<b>4</b>
2.1	Phases . . . . .	4
	<b>Collect</b> . . . . .	4
	<b>Curate</b> . . . . .	4
	<b>Archive</b> . . . . .	6
	<b>Present</b> . . . . .	6
2.2	An iterative process . . . . .	6
2.3	Resources needed by the process . . . . .	7
	Warehouse . . . . .	7
	Depository . . . . .	7
	Workbench . . . . .	7
	Curated source code deposit . . . . .	7
	Catalogues and journals . . . . .	7
2.4	Roles in the process . . . . .	7
	Collector . . . . .	7
	Deposit engineer . . . . .	8
	Curator . . . . .	8
	Archive engineer . . . . .	8
	Presentation designer and Web engineer . . . . .	8
2.5	Implementation requirements . . . . .	8
	Long term availability . . . . .	8
	Historical accuracy . . . . .	8
	Traceability . . . . .	8
	Openness . . . . .	9
	Interoperability . . . . .	9
<b>3</b>	<b>The process, a concrete view</b>	<b>10</b>
3.1	General Motivation for using Git and GitHub . . . . .	10
3.2	SWHAP - GitHub correspondence . . . . .	11
3.3	Process overview . . . . .	11
3.4	The SWHAP template . . . . .	11
3.5	The process, step by step . . . . .	13
	Instantiation . . . . .	13
	Collect phase . . . . .	13
	Curate phase . . . . .	14
3.6	Iteration . . . . .	15
<b>4</b>	<b>A walkthrough on a running example</b>	<b>16</b>
	Starting the process . . . . .	16
	Instantiation . . . . .	16
	Upload files in raw_materials . . . . .	17
	Unpack the source code in the browsable_source directory . . . . .	17
	Create Depository . . . . .	19
	Final depository . . . . .	22

Curate the code . . . . .	22
(Re-)Create the development History . . . . .	25
Create the final repository . . . . .	25
Publish the repositories and trigger Software Heritage acquisition . . . . .	27
Fill the Workbench metadata . . . . .	31
<b>5 Appendix A - Tools that can help</b>	<b>31</b>
<b>6 Appendix B - A few tips on Github</b>	<b>33</b>

## 1) Introduction

Software is everywhere, binding our personal and social lives, embodying a vast part of the technological knowledge that powers our industry, supports modern research, mediates access to digital content and fuels innovation. In a word, a rapidly increasing part of our collective knowledge is embodied in, or depends on software artifacts.

Software does not come out of the blue: it is written by humans, in the form of software Source Code, a precious, unique form of knowledge that, besides being readily translated into machine-executable form, should also “be written for humans to read” (Abelson and Julie Sussman [1]), and “provides a view into the mind of the designer” (Shustek [6]).

As stated in the Paris Call on Software Source code as Heritage for sustainable development (Report [5]), from the UNESCO-Inria expert group meeting, it is essential to preserve this precious technical, scientific and cultural heritage over the long term.

Software Heritage is a non-profit, multi-stakeholder initiative, launched by Inria in partnership with UNESCO, that has taken over this challenge. Its stated mission is to collect, preserve, and make readily accessible all the software source code ever written, in the Software Heritage Archive. To this end, Software Heritage designed specific strategies to collect software according to its nature (Abramatic, Di Cosmo, and Zacchiroli [2]).

For software that is easily accessible online, and that can be copied without specific legal authorizations, the approach is based on automation. This way, as of September 2019, Software Heritage has already archived more than 6 billion unique source code files from over 90 million different origins, focusing in priority on popular software development platforms like GitHub and GitLab and rescuing software source code from legacy platforms, such as Google Code and Gitorious that once hosted more than 1.5 million projects.

For source code that is not easily accessible online, a different approach is needed. It is necessary to cope with the variety of physical media where the source code may be stored, the multiple copies and versions that may be available, the potential input of the authors that are still alive, and the existence of ancillary materials like documentation, articles, books, technical reports, email exchanges. Such an approach shall be based on a focused search, involving a significant amount of human intervention, as demonstrated by the pioneering works reconstructing the history of Unix (Spinellis [7]) and the source code of the Apollo Guidance Computer (Burkey [4]).

This document presents the first version of SWHAP, the *SoftWare Heritage Acquisition Process* to rescue, curate and illustrate landmark legacy software source code, a joint initiative of Software Heritage

and the University of Pisa, in collaboration with UNESCO.

Section 2 provides an *abstract* view of SWHAP, its steps, documents and resources. No specific assumptions on the *tools, platforms and technologies* that may be used to enact it are made, but some requirements are made explicit. Section 3 describes how the abstract process is implemented at the University of Pisa by leveraging the Git toolset and the GitHub collaborative development platform. This implementation is named SWHAPPE (SWH Acquisition Process Pisa Enactor) in this document. Finally, Section 4 provides a walkthrough on an annotated example, using a real world medium-sized software project (Attardi and Flagella [3]).

## 2) The process, abstract view

This section describes SWHAP, the acquisition process for software artifacts at an *abstract* level, that is, without making specific assumptions on the *tools, platforms and technologies* that may be used to perform the various operations described here.

### 2.1) Phases

The activities involved in the acquisition process can be organized in the following four phases, of which the first one is *conservative*, i.e., it is devoted to save the raw materials that the other phases will build upon.

Figure 1 provides a pictorial view of the process, its phases, data stores and roles.

#### Collect

The purpose of this phase is *to find* the source code and related materials and *gather* it *as is* in a physical and/or logical place where it can be properly *archived* for later processing.

Various *strategies* are possible for collecting the raw materials: a dedicated team may proactively search for the artifact of specific software that has been identified as relevant (*pull approach*), or a crowdsourcing process may be set up to allow interested parties to submit software that has not been previously identified (*push approach*).

*Source code* can be provided in a *digital* or *physical* form. Typically, source code for old machines (such as the first Italian computer, CEP, now exposed in the Pisa museum of computing) is available only as paper printouts that may even include hand-written comments: all these materials deserve to be preserved.

*Related materials* can include research articles, pictures, drawings, user manuals: all of these are part of the software history and need to be preserved as well as the source code.

At this stage of elaboration of the process, this phase is better thought of as *abstract*, in the sense that several, more focussed descriptions should be provided to cater for the different situations identified. The same applies to the Curator role, which may need different capabilities in different scenarios.

#### Curate

The purpose of this phase is *to analyze, cleanup and structure* the raw materials that have been collected.

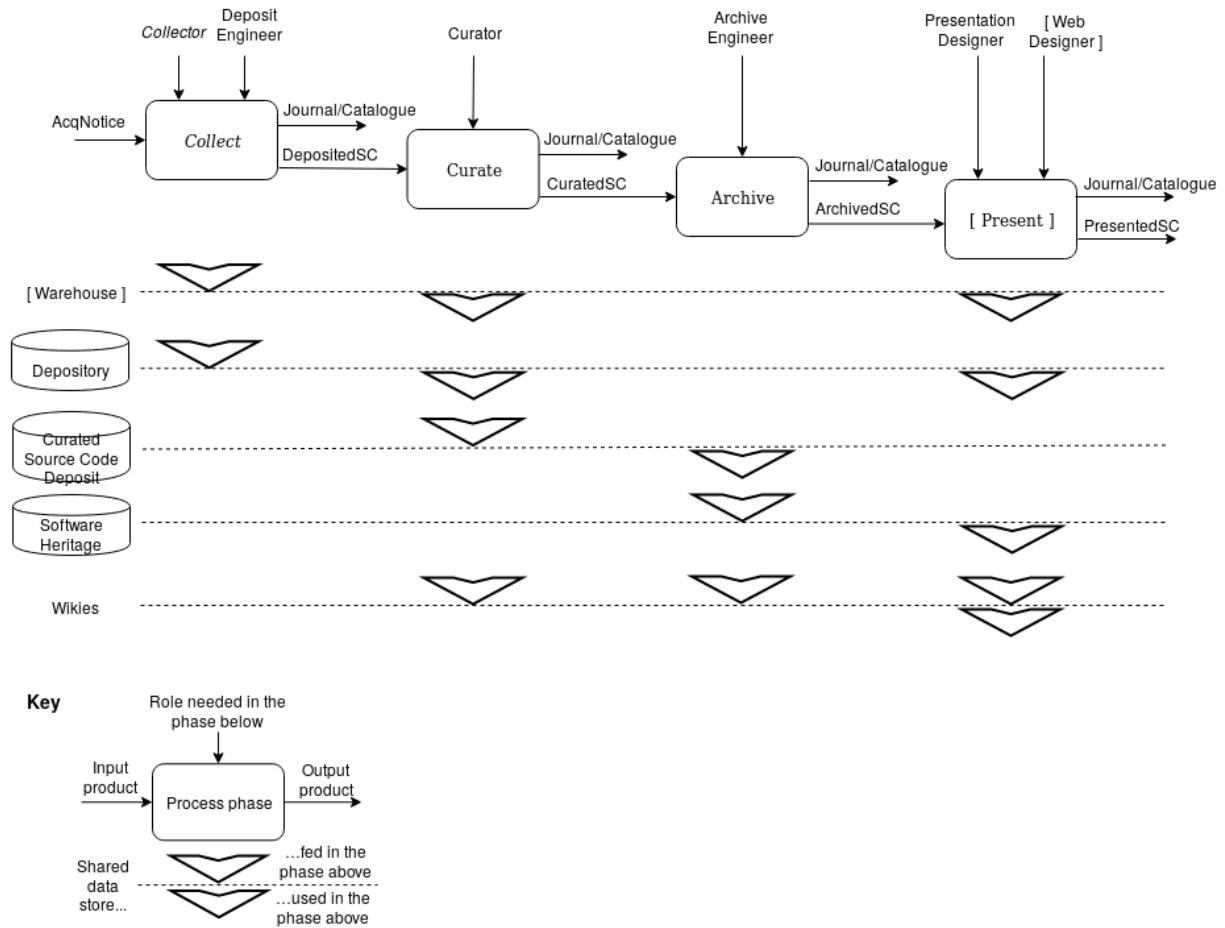


Figure 1: Source code acquisition process.

Preparing software source code for archival in **Software Heritage** requires special care: the source code needs to be *cleaned up*, different *versions* with their *production dates need to be ascertained*, and the *contributors need to be identified* in order to build a *faithful history of the evolution* of the software over time.

Also, proper *metadata* should be created and made available alongside the source code, providing all the key information about the software that is discovered during the curation phase. We recommend to use the vocabulary provided by **CodeMeta** as an extension to schema.org (see <https://codemeta.github.io/terms/>); this includes the software runtime platform, programming languages, authors, license, etc.

Particular care is required to *identify the owners* of the different artifacts, and *obtain if needed the necessary authorizations* to make these artifacts publicly available<sup>1</sup>.

### Archive

The purpose of this phase is to contribute the curated materials to the infrastructures specialized for each kind of materials: **Software Heritage** for the *source code*, **Wikimedia** for *images or videos*, **open access repositories** for *research articles*, **Wikidata** for *software descriptions and properties*, and so on.

Well established guidelines are available for contributing materials to Wikimedia (see <https://commons.wikimedia.org/wiki/Con> and Wikidata (see [https://www.wikidata.org/wiki/Wikidata:Data\\_donation](https://www.wikidata.org/wiki/Wikidata:Data_donation) ), hence we will focus primarily on curating and contributing the software source code to Software Heritage, a process that is new and may require rather technical steps.

### Present

The purpose of this phase is to create dedicated presentations of the curated materials.

Once the curated materials are made available in the dedicated infrastructures, it is possible to use it to create presentations for a variety of purposes: special events, virtual or physical expositions for museums or websites.

For this, the archived materials need to be referenced using the identifiers that each platform provides for its contents. Software Heritage provides intrinsic persistent identifiers that are fully documented at <https://docs.softwareheritage.org/devel/swlh-model/persistent-identifiers.html>

The presentation phase is out of the scope of this document, and as such we are currently not providing a supporting implementation. Anyway, a good example of what can be done is the <https://sciencestories.io> website.

## 2.2) An iterative process

New information may arise at any time: new raw materials may be discovered, refined information may be identified that needs to be added to the curation, and mistakes may need to be corrected. Hence, the overall process must be seen as *iterative*, in the sense that, when new data are available, the pertinent phase can be re-entered and the process enacted once more from there to update all the relevant information. This suggests that, whenever possible, the data stores should be fully versionable, not to loose historical information about the acquisition process itself.

<sup>1</sup>This is a complex issue, that may need to be handled according to country-specific regulations and is out of the scope of the present document. In the United States, one may leverage the “fair use” doctrine, see for example the detailed analysis presented in <https://www.softwarepreservationnetwork.org/bp-fair-use/>

## 2.3) Resources needed by the process

As any process supported digitally, SWHAP needs both human and technical resources to be enacted.

First of all, several data stores and working areas are needed, to save and make public the intermediate products, which are themselves of value, as already mentioned, and to pass the collected information across the phases. These are shown in the lower part of Figure 1, and are summarized here.

### Warehouse

A physical location where physical raw materials are safely archived and stored, with the usual acquisition process<sup>2</sup>.

### Depository

A virtual space where digital raw materials are safely archived. The raw digital materials found in the Depository are used in the Curation phase to produce the source code that Software Heritage can ingest in the Archive phase.

The Depository holds also the related raw materials that may be elaborated and deposited in locations like WikiData, WikiMedia etc. - referred to as **Wikies** in fig. 1 - in the other phases.

### Workbench

Any implementation of the process will need a virtual space and working environment where the activities can be carried out, with support for temporary storage and for logging the various operations in a journal.

### Curated source code deposit

A fully versioned repository, holding the reconstructed development history of the source code, in view of its transfer to Software Heritage.

### Catalogues and journals

As shown in fig. 1, according to the best practices of the archival sciences, each phase shall produce both a *Catalogue* of its products and a *Journal* recording its activities - *who did what, and when*. A list of the *Actors* involved in the process is also necessary. Provision to store all these information safely has to be foreseen in any supporting implementation.

## 2.4) Roles in the process

With respect to the human resources, several roles are needed to enact the process, as indicated in the top part of fig. 1. Here is a short summary of the involved capabilities.

### Collector

Searches and receives the raw materials. Identifies, classifies and separates source code and ancillary materials.

<sup>2</sup>See for example <https://collectiontrust.org.uk/spectrum/>.



**Deposit engineer**

Masters the procedures to archive physical and digital materials, in the local context.

**Curator**

Prepares the version history, identifying the authors and other contributors. Provides a context to the source code, choosing among the ancillary materials.

**Archive engineer**

Masters the procedures to transfer the curated source code to SWH and to publish the context in the Wikies.

**Presentation designer and Web engineer**

These are out of the scope of this document, and are mentioned only to note that, though most of the presentations of the archived software will be on line, the abilities to design the contents of a presentation should be considered separately from the technical ones.

**Remark** the technical resources described above in abstract terms, may be implemented in a variety of ways. For example, one can imagine a single Depository for all the software projects that are collected, but it is also possible to use a separate Depository for each software project, and the same holds for all the other areas.

**Remark** the roles indicated above need not necessarily be played by different persons, e.g., Collector and Curator may be the same person, nor be played by a unique person, e.g., there can be several cooperating Curators, in case of large systems.

**2.5) Implementation requirements**

The abstract process may be implemented using different tools, platforms and technologies, as long as the following key requirements are satisfied.

**Long term availability**

The places where the artefact (both raw and curated) are stored must provide sufficient guarantees of availability over the long term. These places may be physical (warehouses), or logical (depositories).

**Historical accuracy**

Any supporting implementation should support the faithful recording of the authorship of the source code as well as of the reconstruction process, e.g., via a flexible versioning system.

**Traceability**

It must be possible to trace the origin of each of the artifacts that are collected, curated and deposited. For physical materials, we refer to common practice<sup>3</sup>. For digital artifacts, it is recommended to keep a *journal of all the operations* that are performed, and to automate them as much as possible, as the

<sup>3</sup>See for example in <https://collectiontrust.org.uk/spectrum/>.

collection and curation process may require several iterations.

### **Openness**

Any supporting implementation should be based on open and free tools and standards.

### **Interoperability**

Any supporting implementation should provide support for the cooperation and coordination of the many actors playing the many roles of the acquisition process.

### 3) The process, a concrete view

In order to implement SWHAP, the first step is to decide how to instantiate the needed storage and working areas: Warehouse, Depository, Curated source code deposit and Workbench.

The Warehouse is quite similar to the usual storage area where museums preserve their collections; it will need to be set up in a specific physical location, following the well established process for museums, so we will not cover it in this guide.

The other areas, which are virtual spaces, can very well be set up using distinct digital platforms, but it is also possible to instantiate all of them on a single platform.

This choice was made for the SWHAP Pisa Enactor (SWHAPPE), the implementation adopted by the SWHAP@Pisa project: SWHAPPE exploits the collaborative platform GitHub ( <https://github.com/> ) as a host platform for all the virtual support areas of the process.

The solutions adopted in SWHAPPE are described in detail in this section, together with their rationale.

#### 3.1) General Motivation for using Git and GitHub

The choice of Git as the designated tool for traceability and historical accuracy, and of GitHub as the unifying platform to support the SWHAP process proceeds from several considerations that we review below.

First of all we discuss the choice of *Git*. One of the key requirements set forth for SWHAP is the need to ensure *full traceability* of the operations performed on the recovered digital assets. This means that each of the virtual places must provide means to record the history of the modifications made to the digital assets, with information on *who did what and when*. It is very convenient to use the same tool in all of the virtual places of the process, as this reduces the learning effort and streamlines the process. All modern version control systems provide the needed functionality, and we have chosen *Git* as our standard tool, as it is open source (another of our requirements) and broadly adopted. *Git* is a powerful tool, and requires some expertise to make the most out of it. However, a large part of the process is scriptable, and this will hide the underlying complexity to the final user, which can then focus on the main issue: curating and preserving the code and its history.

Another important motivation for our choice of Git is the ability to support *historical accuracy*, i.e., providing a faithful view of the history of both the recovered source code and the acquisition process, as prescribed by the SWHAP key requirements. This is properly accommodated by the commit and versioning mechanisms offered by Git, that allow to separate authors from committers: this way on can record both the story of the original software and the story of its curation.

Finally, we had to choose one of the many online platforms that allow to collaborate using *Git*. GitHub, GitLab.com and Bitbucket are the most known ones and are all regularly archived in Software Heritage, so that *long term availability* of their contents is preserved, no matter which one of these platforms is chosen.

Among all these platforms, GitHub is by far the most popular and active, and is also the platform adopted by the University of Pisa, so it was a natural choice, and we believe this will make the learning curve gentler for most SWHAP adopters.

In the following, we provide detailed guidelines to instantiate the process using Git on GitHub. We think that most of what is described in the guide can be easily adapted to any of the other *Git*-based collaborative platforms.

### 3.2) SWHAP - GitHub correspondence

SWHAPPE is a straightforward implementation of the abstract process, which concretizes the (logical) areas described above by means of *repositories* in GitHub: there are three repositories for each source code acquisition, one for each area of the abstract process:

*Workbench* repository, to implement the Workbench, i.e. a working area where one can temporarily collect the materials and then proceed to curate the code;

*Depository* repository, to implement the Depository, where we can collect and keep separated the raw materials from the curated source code;

*Source Code* repository, to implement the Curated source code deposit, where we store the version history of the code; this version history is usually “synthetic”, rebuilt by the curation team, for old projects that did not use a version control system.

Let’s remark that SWHAPPE has *different* Workbench and Depository repositories for each code acquisition, but it would also be possible to use a single Workbench repository and/or a single Depository repository to work on all the collected software, provided one maintains a well-organised directory structure which keeps the codes separated. On the other hand, we *need* a Source Code repository for each software project, to be actually ingested in the Software Heritage archive.

### 3.3) Process overview

GitHub features *template* repositories that can be instantiated whenever needed (see

<https://help.github.com/en/articles/creating-a-template-repository>). We used this feature in SWHAPPE, and designed a repository, SWHAP-TEMPLATE, that embodies the core support to enact the process. Its structure and use is shown in figure 2. In the picture and in the following *SWName* is a variable that takes the name of the acquired code as its value at each instantiation.

Once SWHAP-TEMPLATE has been instantiated, the *SWName-Workbench* repository so created need to be cloned to the user’s machine, so that he can work on the collected files locally - the Git clone mechanism ensures that these changes can be safely moved to the original repository, for publication and sharing with other actors in the acquisition.

We create two dedicated *branches*<sup>4</sup>, that allow to track separately the operations that will be later moved to the Depository and the Development History Deposit: *Depository*, to contain the raw materials and the browsable sources as well as the metadata, and *SourceCode* to organize the source code in view of the reconstruction of its development history. Finally, the *Depository* and *SourceCode* branches become two repositories: the latter is shipped to the Software Heritage archive, the former is published by the organization promoting the acquisition.

Figure 2. Overview of the SWHAPPE process.

### 3.4) The SWHAP template

The structure of the template is shown in Fig. 3.

First of all, we can see a correspondence between the Depository presented in the process and the area provided by `raw_materials` and `browsable_source`: indeed, these two folders will be moved in order to instantiate the Depository, once they have been loaded, the former with the original materials, just as they

<sup>4</sup>More information on Git *branches* can be found in Appendix B.

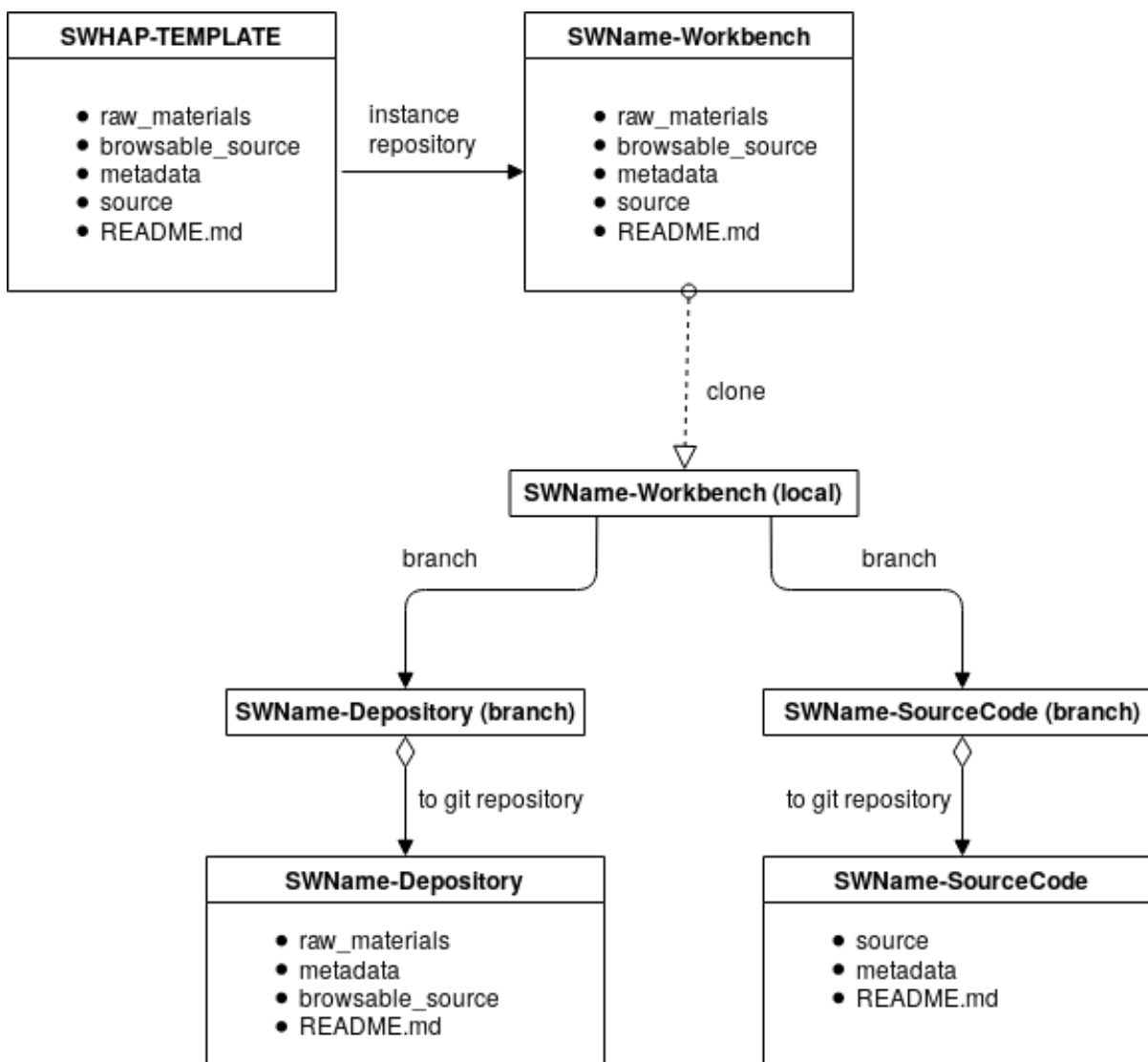


Figure 2: Overview of the SWHAPPE approach

have been found or submitted, the latter with a first revision of the source code, made accessible through the GitHub web interface, e.g., archives should be decompressed, code transcribed from pictures, etc.

The `source` folder is provided as the starting point for the creation of the Source Code *Git* repository, in the curation phase. The curator has to recognize each major version of the code, and refactor it accordingly - one separate folder per each version. To create the Source Code Deposit, however, we exploit the *commit* and *versioning* mechanisms of *Git*.

As for the metadata folder, here we record all the information about the software and the acquisition process (catalogue, actors, journal, etc.). The guidelines to fill this part are given in the template itself.

Branch: master ▾	New pull request	Create new file	Upload files	Find File	Use this template	Clone or download ▾
scatenag Update codemeta.json						Latest commit 7a8039b 2 hours ago
📁 .github	Create FUNDING.yml	2 days ago				
📁 browsable_source	Minor typos	2 days ago				
📁 metadata	Update codemeta.json	2 hours ago				
📁 raw_materials	folders README revision	20 days ago				
📁 source	typos	2 days ago				
📄 INSTANCE_README.md	Update INSTANCE_README.md	6 hours ago				
📄 README.md	Added deletion request	2 days ago				

Figure 3: Top structure of the Template repository.

### 3.5) The process, step by step

#### Instantiation

The first step is to create an instance of the SWHAP-TEMPLATE<sup>5</sup>, that should be named SWName-Workbench, and then to clone it to obtain a local copy on your machine<sup>6</sup>.

From this point on, you'll be able to upload files and to modify/copy/move them locally, and use *Git* commands to push changes to GitHub.

Let us now see the steps to be followed, together with some explanations.

#### Collect phase

##### Upload files in `raw_materials`

All the collected files must be uploaded in the `raw_materials` folder.

If there are physical materials, folder `raw_materials` should contain a reference to the related Warehouse, that may follow the Spectrum guidelines [8].

##### Move the source code to `browsable_source`

All the source code files must then be put into the `browsable_source` folder.

<sup>5</sup>See the documentation on <https://help.github.com/en/articles/creating-a-repository-from-a-template>

<sup>6</sup>See the documentation on <https://help.github.com/en/articles/cloning-a-repository>

If the raw material is an archive, you should unpack it locally and then upload the result on GitHub by performing a push<sup>7</sup>.

If the code was only available in non digital form (e.g. printed listings), you can either transcribe it manually, or use a scanner and an OCR (optical character recognition) tool to parse it. See Appendix A for a list of suggested tools.

Particular care should be used to ensure the files in `browsable_source` have the correct extension: scanner and OCR usually generate files with a generic `.txt` extension, that must be changed to the extension typically used for the programming language they contain.

Note that, at this stage, we are not interested in precise information about the versions of the software. The purpose is to have machine-readable documents.

Finally, in preparation for the curation phase, you may want to copy the files in `browsable_source` to the `source` folder.

## Create Depository

The next step is to create the branch Depository, containing only the folders `raw_materials` and `browsable_source`, together with the metadata updated to this point. Then, create the Depository repository from this branch.

### Curate phase

## Curate the source code

Once the Depository creation is complete, you can move back to the `source` folder in the master branch. Here you have to divide and number the versions, putting the files of each one in a dedicated folder and determining who did what and when.

In practice, this means that *for each version of the software* you need to ascertain:

- the *main contributing author*,
- the *exact date* of the release of this particular version

This information should be consigned in a dedicated metadata file, `version_history.csv`, with the following fields:

Field name	description
directory name	name of the directory containing the source code of this version
author name	name of the main author
author email	email of the main author, when available
date original	original date when this version was made
curator name	name of the curator person or team
curator email	the reference email of the acquisition process
release tag	a tag name if the directory contains a release, empty otherwise
commit message	text containing a brief note from the curation team

## (Re-)Create the Development History

Now we are ready to (re-)create the development history of the software. First you need to create a branch Source Code, with the `src` folder.

<sup>7</sup>See the documentation on <https://help.GitHub.com/en/articles/adding-a-file-to-a-repository-using-the-command-line>.

Then, you can proceed in two ways:

- *manually*: using the *Git* commands to push the successive versions into the `source` folder, reading the information collected in the file `version_history.csv` to set the fields for each version to the values determined during the curation phase;
- *automatically*: using a tool that reads the information from `version_history.csv` and produces the synthetic history in a single run; one such tool has been developed, DT2SG (<https://github.com/Unipisa/DT2SG>), and you can see a running example in the next section.

The result will be a branch that materializes the development history of the software via Git commits and releases.

### Create the final repository

Finally you can create the “official” software repository, taking the versions history from the `src` branch and the metadata from the `master` branch.

## 3.6) Iteration

New material may be discovered after the process has been completed, triggering an iteration of some of the phases described above. In this case, we recommend to proceed as follows:

- if new raw material (non-source code) is found, we have to clone the Depository repository and add new items to it. In this way, the performed commits will correctly follow the previous ones.
- if new source code is found, after we collected it in the Depository, we have the following cases:
  - (1) The recovered source code is related to a version which is already included in the software history.
  - (2) The source code represents a completely new version, with respect to the software history as it was previously collected.

We are not finished yet, since in both cases the SourceCode repository is no longer consistent with the collected source code, and we have to recreate it, performing the following steps:

- Delete the SourceCode repository.
- Move back to the Workbench and according to the current case:
  - if (1), add the source code to the correct version.
  - if (2), add the new version folder with the related metadata.
- Recreate the software history as for the first iteration.



## 4) A walkthrough on a running example

In this section we will show the process at work on one of the first source code acquired by the SWHAP@Pisa project, the CMM conservative garbage collector for C++ that was initially developed for project PoSSo (Polynomial System Solver) and later became the basis for the Java GC and the Oak GC [7]. Since it has evolved through various versions, CMM is a good workbench for SWHAPPE and an appropriate example to show how to use the tools.

### Starting the process

The acquisition process of the CMM software started informally when one of the authors, still active in the Computer Science department, learned about the SWHAP project, and proposed to search for the source code and make it available to the project. Shortly after, we received a mail message with all the sources, as well as the associated research article. Since the materials were already in digital form, the process does not involve a Warehouse.


### Instantiation

## Create a new repository from SWHAP-TEMPLATE

The new repository will start with the same files and folders as [Unipisa/SWHAP-TEMPLATE](#).

Owner

Repository name \*


Unipisa ▾

/

CMM-Workbench ✓

Great repository names are short and memorable. Need inspiration? How about **expert-computing-machine**?

Description (optional)

☐ **Public**  
Anyone can see this repository. You choose who can commit.

☒ **Private**  
You choose who can see and commit to this repository.

Create repository from template

Figure 4: Instantiation of the template

We instantiate on GitHub the SWHAP repository template<sup>8</sup> into a new repository<sup>9</sup>, that we name “CMM-Workbench”. This action, as most of the following ones, can be performed through the user interface (as shown in Figure 4), or programmatically through the GitHub API.

It has the same directory structure as SWHAP-Template, as shown in Figure 3.

To start working, we create a local copy on our computer, cloning this repository<sup>10</sup>. By clicking on the green button “clone or download” (Figure 5), we get a link that we can use for this purpose in the following command from the command line:

```
git clone https://github.com/Unipisa/CMM-Workbench.git
```

Now, we have a local copy of the CMM-Workbench, and we can, first of all, update the README.md file with the correct name and description of the acquisition, and synchronize it with the remote repository:

```
git add README.md
git commit README.md -m "Updated README"
git push
```

We are now ready to start the collect phase.

### Upload files in raw\_materials

Here we fill the local folders with the collected material. In the case of CMM, we got a tar.gz file containing the various versions of the software, organized according to an ad-hoc versioning system. In the raw\_materials folder we store also the paper presenting the software and the email that Giuseppe Attardi sent us along with them, and we commit all these new contents:

```
git add raw_materials
git commit -m "Added raw material"
git push
```

The resulting state of raw\_materials is shown in Figure 6.

### Unpack the source code in the browsable\_source directory

In order to get a browsable version of the source code, we decompress the .tar.gz archive into the browsable\_source folder

```
tar -xzf raw_material/cmm.tgz -C browsable_source
```

and commit the changes as done for the raw\_materials folder

<sup>8</sup><https://github.com/Unipisa/SWHAP-TEMPLATE>

<sup>9</sup>The repository can be either public or private according to the policy of the acquisition team.

<sup>10</sup>See Appendix B for a brief discussion on the convenience of working locally, rather than remotely via the web interface.

Unipisa / CMM-Workbench
Private
Watch 2 Star 0 Fork 0

Code Issues 1 Pull requests 0 Projects 0 Wiki Security Insights Settings

SHWAPPE Workbench of a Customisable Memory Manager
Edit

software-heritage workbench swhappe Manage topics

2 commits 1 branch 8 releases 2 contributors View license

Tree: 8c00149c58 New pull request Create new file Upload files Find file Clone or download

scatenag Updated README		Latest commit 8c00149 2 days ago
.github	Initial commit	2 days ago
.swhap	Updated README	2 days ago
browsable_source	Initial commit	2 days ago
metadata	Initial commit	2 days ago
raw_materials	Initial commit	2 days ago
source	Initial commit	2 days ago
README.md	Updated README	2 days ago

README.md

## CMM Workbench

This **SWHAPPE** workbench is for the acquisition of the source code of CMM, a Customisable Memory Manager.

This workbench comes with a few folders to support the process.

Folder **raw materials** is for the original materials, as they have been found or submitted.

Folder **browsable source** is for a browsable version of the source code. Source files, with right extension, have to be accessible through the GitHub web interface, e.g., archives should be decompressed, images should be transcribed, etc.

Folder **source** is for the curated revision of the source code, as a base for the reconstruction of the development history as a git repository, i.e., a folder for each major version of the code.

Folder **metadata** holds various files with meta information used throughout the process.

Please refer to the **SWHAPPE** guidelines for greater details.

Figure 5: Instantiated workbench for CMM.

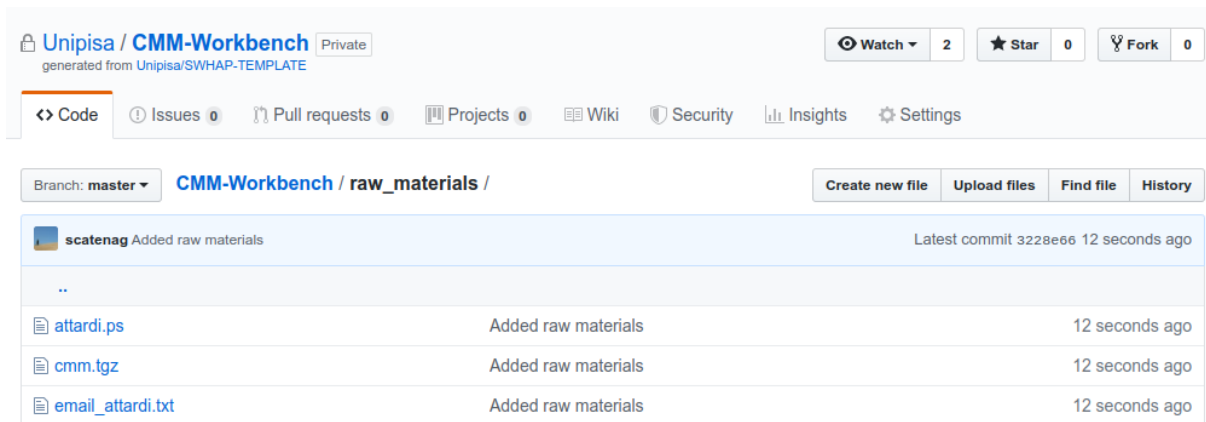


Figure 6: CMM raw materials on GitHub.

```
git add browsable_source
git commit -m "Added browsable source"
git push
```

We can see the resulting state of the repository in Figure 7.

Finally, in preparation for the next phase, curation, we copy the files contained in `browsable_source` into the `source` folder<sup>11</sup>.

```
cp -r browsable_source source
```

Again, we stage changes as in the previous two steps.

```
git add source
git commit -m "Added source"
git push
```

### Create Depository

The Depository has been filled, hence we create the Depository as an orphan branch, i.e., with no references to the parent repository, using the checkout command:

```
git checkout --orphan Depository
```

<sup>11</sup>Here shown with unix command line.

Unipisa / CMM-Workbench generated from Unipisa/SWHAP-TEMPLATE Private Watch 2 Star 0 Fork 0

[Code](#) [Issues 0](#) [Pull requests 0](#) [Projects 0](#) [Wiki](#) [Security](#) [Insights](#) [Settings](#)

Branch: **master** **CMM-Workbench / browsable\_source / cmm /** Create new file Upload files Find file History

**scatenag** Added browsable source Latest commit 2098382 34 seconds ago

..		
1.1/cmm	Added browsable source	33 seconds ago
1.3/cmm	Added browsable source	33 seconds ago
1.4/cmm	Added browsable source	33 seconds ago
1.5/cmm	Added browsable source	33 seconds ago
1.6/cmm	Added browsable source	33 seconds ago
1.7/cmm	Added browsable source	33 seconds ago
1.8	Added browsable source	33 seconds ago
1.9	Added browsable source	33 seconds ago
devtools	Added browsable source	33 seconds ago
Makefile	Added browsable source	33 seconds ago
README	Added browsable source	33 seconds ago
README.merge	Added browsable source	33 seconds ago
cmm	Added browsable source	33 seconds ago
curr	Added browsable source	33 seconds ago
version-update	Added browsable source	33 seconds ago

**README**

This directory contains the official distributions of the CMM.  
The directory contains subdirectories for each release named as follows:

Figure 7: CMM browsable sources on GitHub.

As a result, we moved to the Depository branch. Here we modify the README (guidelines to fill the README file are given in the template) and remove the `source` and `metadata` folder, since they are not interesting for this area:

```
git rm -rf source metadata
```

We stage the last modifications and then push to the remote repository.

```
git add .
git commit -m "Added raw materials from master branch"
git push --mirror origin
```

We are almost ready to move the Depository to a new repository: before that, however, we have to create the new remote repository on GitHub (Figure 8 shows how to do this using the web interface; here too one could use the GitHub API instead).

**Owner**      **Repository name \***

Unipisa / CMM-Depository ✓

Great repository names are short and memorable. Need inspiration? How about **legendary-doodle?**

**Description (optional)**

---

☒ **Public**  
Anyone can see this repository. You choose who can commit.

☐ **Private**  
You choose who can see and commit to this repository.

---

Skip this step if you're importing an existing repository.

☐ **Initialize this repository with a README**  
This will let you immediately clone the repository to your computer.

Add .gitignore: **None** | Add a license: **None** ⓘ

---

**Create repository**

Figure 8: CMM-Depository creation.

### Final depository

Finally, we can perform a push and fill the remote repository.

```
git push https://github.com/Unipisa/CMM-Depository.git +Depository:master
```

We can check the resulting repositories via the web interface (Figure 9): CMM-Depository is now filled with the pushed materials.

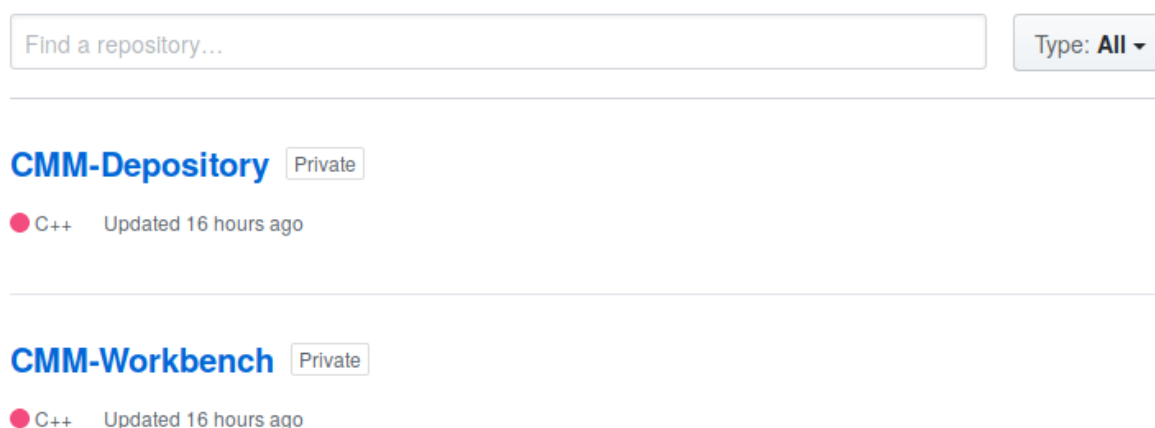


Figure 9: The CMM repositories at the end of the collect phase.

The Depository branch is then removed from the Workbench, to avoid having multiple copies that may diverge. Should new materials became available, a new iteration of the process should start, re-initializing the Workbench with the information in the Depository.

```
git checkout master
git push --delete origin Depository
git branch -D Depository
```

### Curate the code

**Version History** In this phase, the curation team should clean up the code and organize it in separate folders, one per version. In the case of CMM, the code is already structured this way, as shown in Figure 9, so there is nothing to do.

In order to support the (re-)creation of the development history of the original project, we prepare the `version_history.csv` file with the appropriate metadata (see (Figure {#fig:cmms\_vers\_hist})).

**Codemeta** Contextually we fill the `metadata/codemeta.json` template file (see Figure {#fig:cmms\_json}, left) with metadata according to CodeMeta guidelines obtaining what shown in (see Figure {#fig:cmms\_json}, right).

Unipisa / **CMM-Workbench** Private  
 generated from Unipisa/SWHAP-TEMPLATE

Watch 2 Star 0 Fork 0

Code Issues 0 Pull requests 0 Projects 0 Wiki Security Insights Settings

Branch: master **CMM-Workbench / metadata / version\_history.csv** Find file Copy path

scatenag Added metadata 6163cc2 25 seconds ago

1 contributor

9 lines (9 sloc) 1.7 KB

Raw Blame History Open in Git History

Search this file...

	directory name	author name	author email	date	curator name	curator email	release tag	commit message
1	1.1	Giuseppe Attardi	attardi@di.unipi.it	10/27/1994 12:26:20	CMM Curation Team	guido.scatena@unipi.it	*	[Contributors mentioned in Char
2	1.3	Giuseppe Attardi	attardi@di.unipi.it	11/07/1994 17:36:34	CMM Curation Team	guido.scatena@unipi.it	*	[Contributors mentioned in Char
3	1.4	Giuseppe Attardi	attardi@di.unipi.it	10/03/1995 11:43:54	CMM Curation Team	guido.scatena@unipi.it	*	[Contributors mentioned in Char
4	1.5	Giuseppe Attardi	attardi@di.unipi.it	11/02/1995 16:11:11	CMM Curation Team	guido.scatena@unipi.it	*	[Contributors mentioned in Char
5	1.6	Giuseppe Attardi	attardi@di.unipi.it	06/06/1996 11:07:03	CMM Curation Team	guido.scatena@unipi.it	*	[Contributors mentioned in Char
6	1.7	Giuseppe Attardi	attardi@di.unipi.it	11/24/1996 19:13:45	CMM Curation Team	guido.scatena@unipi.it	*	[Contributors mentioned in Char
7	1.8	Giuseppe Attardi	attardi@di.unipi.it	05/15/1997 08:24:54	CMM Curation Team	guido.scatena@unipi.it	*	[Contributors mentioned in Char
8	1.9	Giuseppe Attardi	attardi@di.unipi.it	03/03/1998 00:00:00	CMM Curation Team	guido.scatena@unipi.it	*	[Contributors mentioned in Char

Figure 10: The version history for CMM



```

{
  "@context": "https://doi.org/10.5063/schema/codemeta-2.0",
  "@type": "SoftwareSourceCode",
  "identifier": "a unique identifier",
  "description": "a brief description of the software",
  "applicationCategory": "Type of software application, e.g. 'Game, Multimedia'",
  "name": "software name",
  "codeRepository": "URL to related resources",
  "license": "info about the license",
  "version": "X.X",
  "keywords": [
    "tag for the software",
    "other tag"
  ],
  "releaseNotes": "release notes and comments",
  "funding": "software funded by...(e.g. specific grant)",
  "runtimePlatform": "operating system",
  "softwareRequirements": [
    "dependencies and other requirements"
  ],
  "developmentStatus": "from https://www.repostatus.org/ e.g. Unsupported",
  "dateCreated": "YYYY-MM-DD",
  "datePublished": "YYYY-MM-DD",
  "relatedLink": [
    "https://...",
    "http://..."
  ],
  "programmingLanguage": "main programming language",
  "isPartOf": "maybe the software is part of some project",
  "referencePublication": [
    {
      "@type": "ScholarlyArticle",
      "identifier": "https://doi.org/xx.xxxx/xxxx.xxxx.xxxx",
      "name": "title of publication"
    }
  ],
  "author": [
    {
      "@type": "Person",
      "givenName": "Given",
      "familyName": "Family",
      "affiliation": "affiliation at the time of development",
      "email": "given.family@gorg.com"
    }
  ],
  "contributor": [
    {
      "@type": "Person",
      "givenName": "Given",
      "familyName": "Family",
      "affiliation": "affiliation at the time of development",
      "email": "given.family@gorg.com"
    }
  ]
}

```

```

{
  "@context": "https://doi.org/10.5063/schema/codemeta-2.0",
  "@type": "SoftwareSourceCode",
  "identifier": "CMM",
  "description": "conservative garbage collector for C++ developed for PoSso",
  "name": "Customizable Memory Management",
  "codeRepository": "https://github.com/Unipisa/CMM",
  "applicationCategory": "Memory Management",
  "version": "1.9",
  "keywords": [
    "Garbage Collector",
    "Memory Management"
  ],
  "runtimePlatform": "SunOS 4.x, Solaris 2.x, Linux 1.x, 2.x, AIX (RS6000)",
  "softwareRequirements": [
    "g++"
  ],
  "developmentStatus": "Unsupported",
  "dateCreated": "1994-08-27",
  "datePublished": "1995-08-26",
  "programmingLanguage": "c++",
  "isPartOf": "PoSso (Polynomial System Solver)",
  "referencePublication": [
    {
      "@type": "ScholarlyArticle",
      "identifier": "https://doi.org/10.1006/jSCO.1996.0013",
      "name": "Memory Management in the PoSso Solver"
    }
  ],
  "author": [
    {
      "@type": "Person",
      "givenName": "Giuseppe",
      "familyName": "Attardi",
      "affiliation": "Dipartimento di Informatica, Università di Pisa"
    },
    {
      "@type": "Person",
      "givenName": "Tito Flagella",
      "familyName": "Tito Flagella",
      "affiliation": "Dipartimento di Informatica, Università di Pisa"
    },
    {
      "@type": "Person",
      "givenName": "Pietro",
      "familyName": "Iglio",
      "affiliation": "Dipartimento di Informatica, Università di Pisa"
    }
  ],
  "contributor": [
    {
      "@type": "Person",
      "givenName": "Carlo",
      "familyName": "Traverso",
      "affiliation": "Dipartimento di Informatica, Università di Pisa"
    }
  ]
}

```

Figure 11: CMM instantiation (right) of codemeta.json template (left)

**License** To conclude the curation phase, we have to identify licensing information.

If we find a file specifying the licence in the source code, we have to copy its content in the metadata/LICENCE file. Otherwise, in the case there is no licensing file in the source and we obtained license information in other finds, we fill metadata/LICENCE according to the SPDX standard.

### (Re-)Create the development History

The development history can now be (re-)created either by issuing manually (i.e. for each version directory) the appropriate git commands, or by using a specialised tool.

**Manually** We have to create a clean dedicated SourceCode branch

```
git checkout --orphan SourceCode
git rm -r
```

Here is the template to create manually an individual commit/release:

```
export GIT_COMMITTER_DATE="YYYY-MM-DD HH:MM:SS"
export GIT_COMMITTER_NAME="Committer Name <email@address>"
export GIT_AUTHOR_DATE="YYYY-MM-DD HH:MM:SS"
export GIT_AUTHOR_NAME="Author Name <email@address>"
git commit -m 'Commit Message Here'
git tag -a 1.9 -m "Version 1.9"
```

**With DT2SG** And here is an example using the DT2SG tool

```
dotnet ./DT2SG/DT2SG_app.dll
-r SWHAP-EXAMPLE/CMM-Workbench
/source/cmm/
-m SWHAP-EXAMPLE/CMM-Workbench
metadata/version_history.csv
```

As a result we will find in our local repository a new local branch containing the rebuilt version history, that is shown in Figure 12.

### Create the final repository

We move back to the master branch using the checkout command, then remove raw\_materials and source from it:

```
git rm -rf raw_materials browsable_source source
```

Unipisa / CMM Private

Watch 2 Star 0 Fork 0

Code Issues 0 Pull requests 0 Projects 0 Wiki Security Insights Settings

Branch: SourceCode

Commits on Sep 23, 2019

1.9 - ...	Giuseppe Attardi authored and <b>scatenag</b> committed on Mar 3, 1998	4d46ebd
Contributors mentioned in Changelog : <ul style="list-style-type: none"><li>- Giuseppe Attardi @attardi</li><li>- Tito Flagella @tflagella</li><li>- Pietro Iglio</li></ul>		
1.8 - ...	Giuseppe Attardi authored and <b>scatenag</b> committed on May 15, 1997	7332413
1.7 - ...	Giuseppe Attardi authored and <b>scatenag</b> committed on Nov 24, 1996	fbcc806
1.6 - ...	Giuseppe Attardi authored and <b>scatenag</b> committed on Jun 6, 1996	127f2b6
1.5 - ...	Giuseppe Attardi authored and <b>scatenag</b> committed on Nov 2, 1995	a5c7b67
1.4 - ...	Giuseppe Attardi authored and <b>scatenag</b> committed on Oct 3, 1995	fa9db0d
Contributors mentioned in Changelog : <ul style="list-style-type: none"><li>- Giuseppe Attardi @attardi</li><li>- Tito Flagella @tflagella</li></ul>		
1.3 - ...	Giuseppe Attardi authored and <b>scatenag</b> committed on Nov 7, 1994	d5fc834
Contributors mentioned in Changelog : <ul style="list-style-type: none"><li>- Giuseppe Attardi @attardi.</li></ul>		
1.1 - ...	Giuseppe Attardi authored and <b>scatenag</b> committed on Oct 27, 1994	93765ea

Figure 12: An excerpt of the synthetic history of CMM.

We now create the README.md file, add it and commit changes:

```
git add README.md
git commit -m "Final repository created"
```

Now we create the final remote repository, that we call “CMM”, see Figure 13, and we push the relevant branches (and tags) to it.

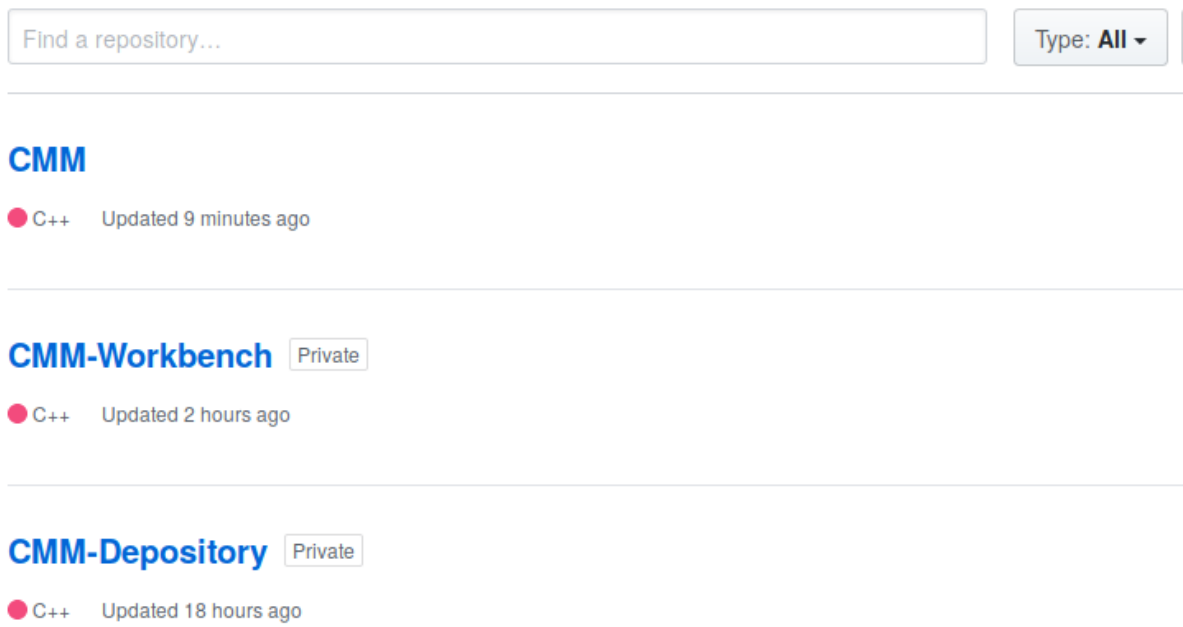


Figure 13: The creation of the final repository.

```
git push https://github.com/Unipisa/CMM.git +master:master +SourceCode:SourceCode
git push --tags https://github.com/Unipisa/CMM.git +master:master +SourceCode:SourceCode
```

Figures 14, 15, 16 show the final result of CMM, their Depository and Workbench.

### Publish the repositories and trigger Software Heritage acquisition

In order to publish the Depository and SourceCode repositories we have to set their visibility to “public”, either through GitHub web interface or using the GitHub API as follows:

```
curl -s -H 'Authorization: token '$auth_token'
-H 'application/vnd.github.baptiste-preview+json'
--data '{"private": false}'
-X PATCH https://api.github.com/repos/$org/$repository_archive
```

Unipisa / CMM

Sponsor Watch 4 Star 0 Fork 0

Code Issues 0 Pull requests 0 Projects 0 Wiki Security Insights Settings

a Customisable Memory Manager Edit

software-heritage archive swhappy Manage topics

8 commits 2 branches 8 releases 1 contributor View license

Branch: master New pull request Create new file Upload files Find file Clone or download

scatenag Final repository created Latest commit 819176c 2 days ago

.github	Initial commit	2 days ago
LICENSE	Final repository created	2 days ago
README.md	Updated README	2 days ago
codemeta.json	Final repository created	2 days ago

README.md

# CMM

## a Customisable Memory Manager

This repository contains the [CMM Development History](#).

The original finds are stored in the [Depository](#) containing the [raw materials](#) and the [browsable source](#).

[Information on the acquisition of this code](#) can be found in the [CMM-Workbench](#) repository.

This repository was created with the support of the [Software Heritage Acquisition Process Pisa Enactor](#).

Figure 14: The final CMM repository.

The screenshot shows the GitHub interface for the repository 'Unipisa / CMM-Depository'. At the top, there are navigation tabs: 'Code', 'Issues' (0), 'Pull requests' (0), 'Projects' (0), 'Wiki', 'Security', 'Insights', and 'Settings'. Below these, the repository name 'SHWAPPE Depository of a Customisable Memory Manager' is displayed, along with an 'Edit' button. A secondary navigation bar includes 'software-heritage', 'depository', 'swhappe', and 'Manage topics'. A progress bar shows '1 commit', '1 branch', '0 releases', and '1 contributor'. Below this, there are buttons for 'Branch: master', 'New pull request', 'Create new file', 'Upload files', 'Find file', and 'Clone or download'. A table lists recent updates to the README file, showing updates by 'scatenag' 2 days ago. The main content area displays the 'README.md' file, which contains the following text:

## CMM Depository

**This is the depository for the acquisition of CMM, a Customisable Memory Manager.**

This repository contains the [raw materials](#) and the [browsable source](#) of CMM.

[Information on the acquisition process](#) can be found in the [Workbench](#).

The resulting [development history](#) can be found in the [CMM repository](#).

This repository was created with the support of the [Software Heritage Acquisition Process Pisa Enactor](#).

Figure 15: The final CMM Depository.

Unipisa / **CMM-Workbench** Private  
generated from Unipisa/SWHAP-TEMPLATE

Watch 2 Star 0 Fork 0

Code Issues 1 Pull requests 0 Projects 0 Wiki Security Insights Settings

SHWAPPE Workbench of a Customisable Memory Manager Edit

software-heritage workbench swhappe Manage topics

16 commits 1 branch 8 releases 2 contributors View license

Branch: master New pull request Create new file Upload files Find file Clone or download

scatenag	Update journal.md	Latest commit e13adf5 19 hours ago
.github	Initial commit	2 days ago
metadata	Update journal.md	19 hours ago
LICENSE	Final repository created	2 days ago
README.md	Workbench cleaned and README updated	2 days ago
codemeta.json	Final repository created	2 days ago

README.md

## CMM Workbench

This **SWHAPPE** workbench is for the acquisition of the source code of CMM, a Customisable Memory Manager.

This repository was created with the support of the [Software Heritage Acquisition Process Pisa Enactor](#) and contains the [Information on the acquisition process](#).

The original finds are stored in the [Depositary](#) containing the [raw materials](#) and the [browsable source](#).

The resulting [development history](#) can be found in the [CMM repository](#).

Please refer to the [SWHAPPE guidelines](#).

Figure 16: The final CMM Workbench.

where **\$repository\_archive** is CMM or CMM-Depository and **\$auth\_token** is the authorization token. As a result, the code is now publicly visible at

**<https://github.com/Unipisa/CMM.git/>**

Finally, we trigger the archival of this repository in Software Heritage, using the “save code now” functionality. This can be done using the web interface at **<https://save.softwareheritage.org>**, or by connecting to the API on the command line as follows:

```
curl -s -X POST https://archive.softwareheritage.org/api/1/origin/save/git/url/$repo_url
```

where **\$repo\_url** is **<https://github.com/Unipisa/CMM.git/>** and the archived software will be at

```
[**[Software Heritage archived software]({.underline}**)](https://archive.softwareheritage.org/browse/search/?q=https%3A%2F%2Fgithub.com%2FUnipisa%2F)
```

### Fill the Workbench metadata

In order to preserve information about the curation process we have to fill the template files under the Workbench metadata. Starting from some template files (see Figure {#fig:cmmd-metadata}, left), we obtain what shown in Figure {#fig:cmmd-metadata}, right.

In particular we should create :

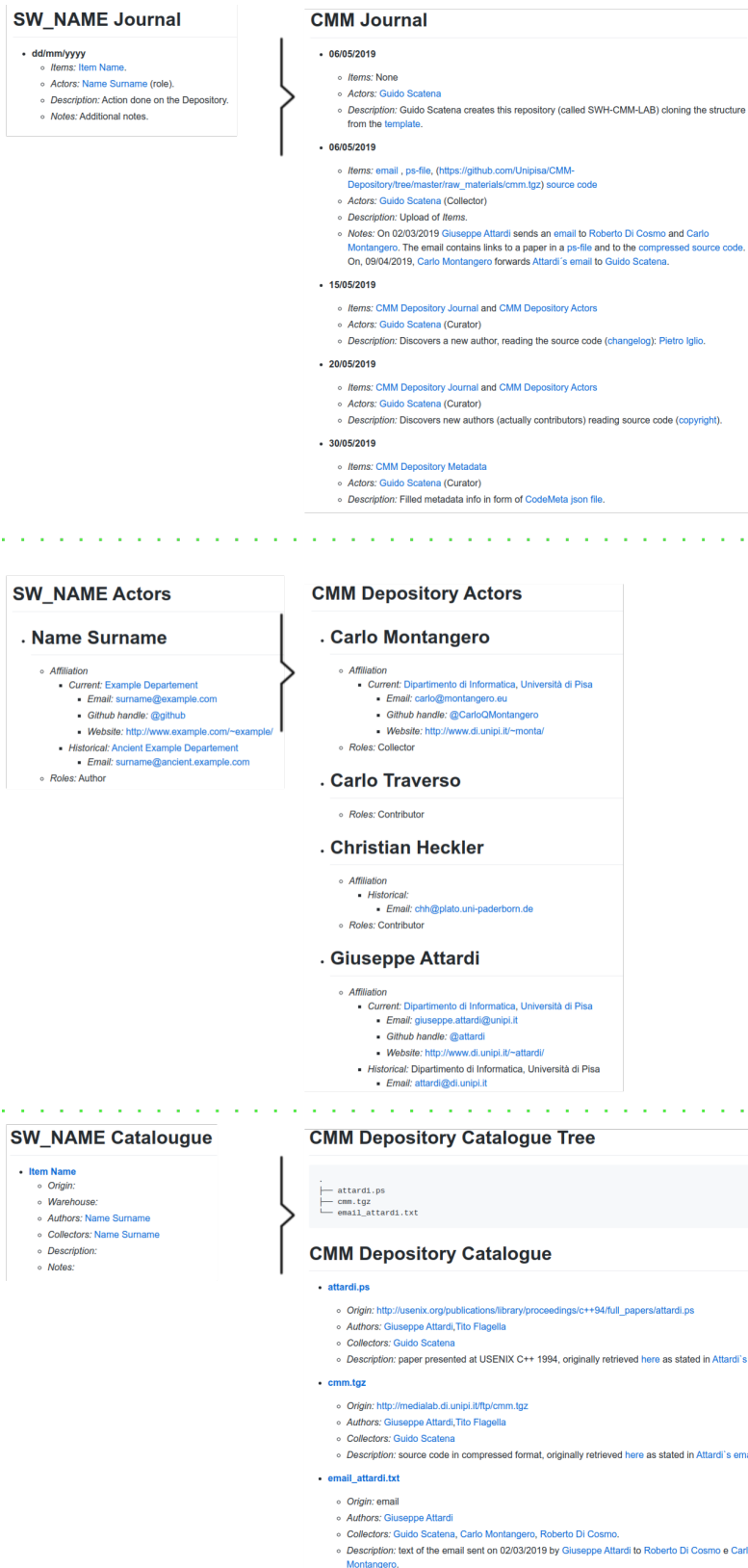
- a catalogue : `metatdata/catalogue.md`, where each item in the `raw_materials` should have a record describing its origin, the possible warehouse, their authors and collectors along with a description. The result of `tree -a` on `raw_materials` should be included;
- a journal : `metatdata/journal.md`, where each collect and curate action should be annotated;
- an actors registry: `metatdata/actors.md`, every person taking part in the process should be registered, with their roles, affiliations and contact information;
- a notepad : `metatdata/journal.md` where write possible information not covered by previous files.

## 5) Appendix A - Tools that can help

Here is a list of tools for code acquisition and curation that have been used during the initial experimentation of SWHAPPE:

- Used/suggested OCR:
  - Tesseract (<https://github.com/tesseract-ocr/>). It can be installed and used from command line. An API is also provided to use the OCR in a script.
  - OCR.space (<https://ocr.space/>). Online OCR and free API.
- Dedicated scripts:





- DT2SG-Directory Tree 2 Synthetic Git (<https://github.com/Unipisa/SWHAP-DT2SG>). Creates the synthetic history of the software.
- SWHAP-EXAMPLE(<https://github.com/Unipisa/SWHAP-EXAMPLE>)

Many other tools exist, and are currently under construction and will be loaded on the SWHAPPE repository on GitHub.

## 6) Appendix B - A few tips on Github

*Git* is a distributed version-control system for tracking changes in source code during software development. Here, we provide some references on *Git* and the GitHub platform.

For a review on GitHub key concepts, you can see the following glossary:

<https://help.github.com/en/articles/github-glossary>.

In order to fully exploit Github, you should install *Git* on your pc:

<https://git-scm.com/book/en/v2/Getting-Started-Installing-Git>.

This will allow you to use Git from command line. Even if it can be less intuitive, it's more powerful than working with the web interface: for instance, you can upload folders and files of any size, without the limitations of the latter. Furthermore, using Git commands allows for instantiating the process on any Git supported platform. For a review of the commands, please check the manual: <https://git-scm.com/docs>.

As an alternative, if you're using a Mac or Windows, you can download Github Desktop, which provides a comfortable GUI: <https://desktop.github.com/>.

For more information about the commit mechanism and how to see the log of changes, please see the following link: <https://git-scm.com/book/en/v2/Git-Basics-Viewing-the-Commit-History>.

To implement the process and separate areas, we chose to create two different branches (Depository and SourceCode) and get the corresponding repositories from them. Each branch has an independent commit history, thus the history of Depository and SourceCode is kept clean and easy to consult. Here is a discussion on how to see the branch history: <https://stackoverflow.com/questions/16974204/how-to-get-commit-history-for-just-one-branch>.

## Bibliography

- [1] Harold Abelson and Gerald J. Sussman with Julie Sussman. *Structure and Interpretation of Computer Programs*. Cambridge, MA: The MIT Press and McGraw-Hill, 1985, pp. xx + 542. ISBN: 0-262-01077-1 (MIT Press), 0-07-000422-6 (McGraw-Hill).
- [2] Jean-François Abramatic, Roberto Di Cosmo, and Stefano Zacchiroli. "Building the Universal Archive of Source Code". In: *Commun. ACM* 61.10 (Sept. 2018), pp. 29–31. ISSN: 0001-0782. DOI: 10.1145/3183558. URL: <http://doi.acm.org/10.1145/3183558>.

- 
- [3] Giuseppe Attardi and Tito Flagella. “Memory Management in the PoSSo Solver”. In: *J. Symb. Comput.* 21.3 (1996), pp. 293–311. DOI: 10.1006/jsco.1996.0013. URL: <https://doi.org/10.1006/jsco.1996.0013>.
  - [4] Ronald Burkey. *Virtual AGC - Changelog*. Available at <http://ibiblio.org/apollo/changes.html>. Spans years 2003 to 2019.
  - [5] Expert Group Report. *Paris Call: Software Source Code as Heritage for Sustainable Development*. Available from <https://unesdoc.unesco.org/ark:/48223/pf0000366715>. 2019.
  - [6] Leonard J. Shustek. “What Should We Collect to Preserve the History of Software?” In: *IEEE Annals of the History of Computing* 28.4 (2006), pp. 110–112. DOI: 10.1109/MAHC.2006.78. URL: <http://dx.doi.org/10.1109/MAHC.2006.78>.
  - [7] Diomidis Spinellis. “A repository of Unix history and evolution”. In: *Empirical Software Engineering* 22.3 (2017), pp. 1372–1404. DOI: 10.1007/s10664-016-9445-5. URL: <https://doi.org/10.1007/s10664-016-9445-5>.